



H. ALDEN SMITH HOUSE & APARTMENTS

MINNEAPOLIS, MN 55403



**PERFORMANCE
DRIVEN DESIGN.**
LHBcorp.com

701 Washington Ave. N, Ste 200 | Minneapolis, MN 55401 | 612.338.2029

CLIENT:



528 Hennepin Avenue
The Cowles Center - Studio 418
Minneapolis, MN 55403

THIS SQUARE APPEARS 1/2"X1/2"
ON FULL SIZE SHEETS

NO	DATE	ISSUED FOR
2	8/31/18	LUA SUBMITTAL
1	7/23/18	CITY PDR SUBMITTAL
NO	DATE	ISSUED FOR

NO	DATE	REVISION

**PRELIMINARY
NOT FOR CONSTRUCTION
09/19/18**

COPYRIGHT 2017 BY LHB, INC. ALL RIGHTS RESERVED.

PROJECT NAME:

**H. ALDEN SMITH HOUSE &
APARTMENTS**
1403 HARMON PLACE
MINNEAPOLIS, MN 55403

DRAWING TITLE:

PROJECT TITLE SHEET

FILE: XXX

DRAWN BY: Author

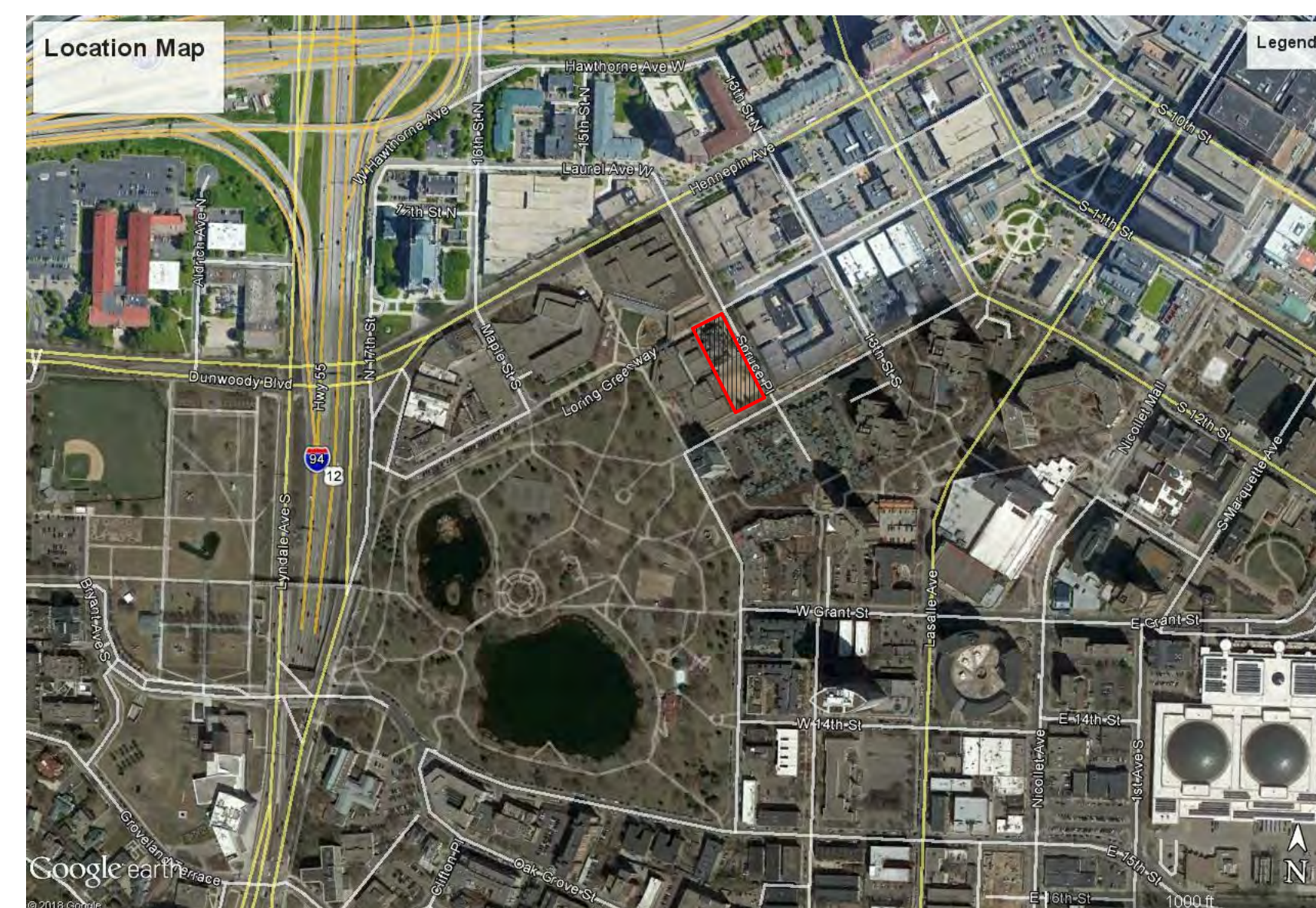
CHECKED BY: Checker

PROJ. NO: 170541

DRAWING NO:

G-0.0 PDR

LOCATION MAP



PROJECT TEAM

OWNERS

W+Noordijk, inc.
528 Hennepin Ave
The Cowles Center - Studio 418
Minneapolis, MN 55403

ARCHITECT & LANDSCAPE ARCHITECT

LHB
701 Washington Ave N, Suite 200
Minneapolis, MN 55401
612.338.2029

CIVIL ENGINEER

LHB
701 Washington Ave N, Suite 200
Minneapolis, MN 55401
612.338.2029

STRUCTURAL ENGINEER

Mattson Macdonald Young, Inc.
901 North 3rd Street, Suite 100
Minneapolis, MN 55401
612.827.7825

SHEET INDEX

GENERAL SHEETS

G-0.0 PDR PROJECT TITLE SHEET
SURVEY

CIVIL SHEETS

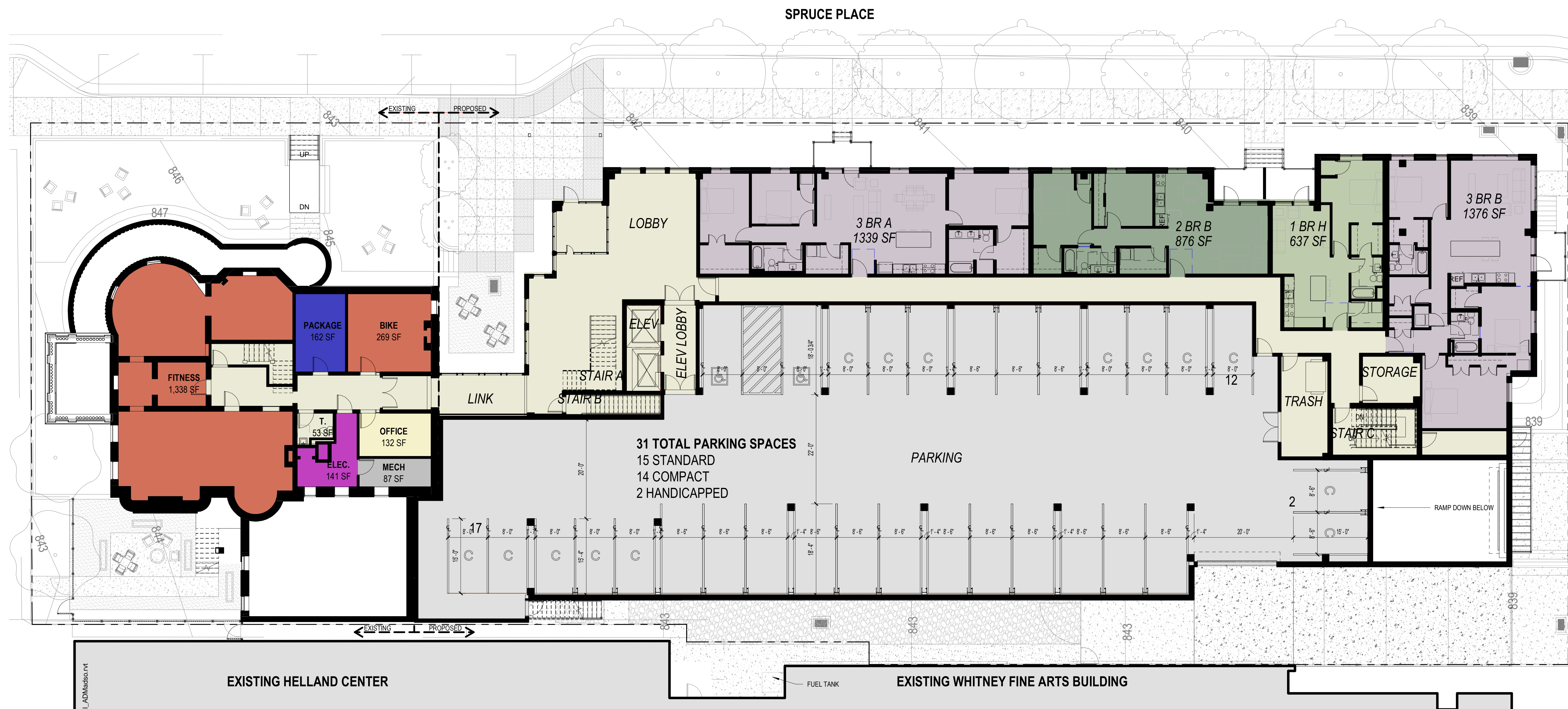
C101 DEMOLITION PLAN
C201 SURFACING AND LAYOUT PLAN
C301 GRADING PLAN
C401 UTILITY PLAN

LANDSCAPE SHEETS

L101 PLANTING PLAN
L500 PLANTING DETAILS

ARCHITECTURAL SHEETS

A-1.0 PDR BASEMENT PLAN
A-1.1 PDR GROUND FLOOR PLAN
A-1.2 PDR 2ND FLOOR PLAN
A-1.3 PDR 3RD FLOOR PLAN
A-1.4 PDR 4TH FLOOR PLAN
A-1.5 PDR 5TH FLOOR PLAN
A-1.6 PDR 6TH FLOOR PLAN
A-1.7 PDR ROOF PLAN
A-2.0 PDR BUILDING ELEVATIONS
A-2.1 PDR BUILDING ELEVATIONS
A-2.2 PDR BUILDING ELEVATIONS
A-2.3 PDR BUILDING ELEVATIONS
A-3.0 PDR PERSPECTIVES
A2.00 EXTERIOR ELEVATIONS - East Elevation
A2.01 EXTERIOR ELEVATIONS - West Elevation
A2.02 EXTERIOR ELEVATIONS - North, South & Link Elevation
A3.00 BUILDING SECTIONS



1 GROUND FLOOR
3/32" = 1'-0"

PARKING BASEMENT	
STANDARD STALLS	16
COMPACT STALLS	29
PARKING GROUND FLOOR	
STANDARD STALLS	15
COMPACT STALLS	14
ACCESSIBLE STALLS	2
TOTAL ENCLOSED PARKING = 76 SPACES	

LHB
PERFORMANCE DRIVEN DESIGN.
 LHBcorp.com
 701 Washington Ave. N. Ste 200 | Minneapolis, MN 55401 | 612.338.2029

CLIENT:
W+Noordijk, inc.

528 Hennepin Avenue
 The Cowles Center - Studio 418
 Minneapolis, MN 55403

THIS SQUARE APPEARS 1/2"X1/2"
 ON FULL SIZE SHEETS

NO	DATE	ISSUED FOR
2	8/31/18	LUVA SUBMITTAL
1	7/23/18	CITY PDR SUBMITTAL
NO		

NO	DATE	REVISION

PRELIMINARY
NOT FOR CONSTRUCTION
 09/19/18

COPYRIGHT 2017 BY LHB, INC. ALL RIGHTS RESERVED.
 PROJECT NAME:
H. ALDEN SMITH HOUSE & APARTMENTS
 1403 HARMON PLACE
 MINNEAPOLIS, MN 55403

DRAWING TITLE:
GROUND FLOOR PLAN

FILE: XXX
 DRAWN BY: Author
 CHECKED BY: Checker
 PROJ. NO: 170541
 DRAWING NO:
A-1.1 PDR

C:\Users\adamso\Documents\170541 Alden Smith Apartments A18 Central_AD\Main.dwg.vrt
 9/17/2018 4:43:21 PM



1 FLOOR 2 PLAN PDR
3/32" = 1'-0"

C:\Users\admaiso\Documents\170641 Alden Smith Apartments A18 Central_ADMaiso.rvt
9/17/2018 4:43:24 PM



**PERFORMANCE
DRIVEN DESIGN.**
LHBcorp.com

701 Washington Ave. N. Ste 200 | Minneapolis, MN 55401 | 612.338.2029

CLIENT:

W+Noordijk, inc.

528 Hennepin Avenue
The Cowles Center - Studio 418
Minneapolis, MN 55403

THIS SQUARE APPEARS 1/2"X1/2"
ON FULL SIZE SHEETS

2	8/31/18	LUVA SUBMITTAL
1	7/23/18	CITY PDR SUBMITTAL
NO	DATE	ISSUED FOR

NO	DATE	REVISION

PRELIMINARY
NOT FOR CONSTRUCTION
09/19/18

COPYRIGHT 2017 BY LHB, INC. ALL RIGHTS RESERVED.

PROJECT NAME:

**H. ALDEN SMITH HOUSE &
APARTMENTS**
1403 HARMON PLACE
MINNEAPOLIS, MN 55403

DRAWING TITLE:

2ND FLOOR PLAN

FILE: XXX

DRAWN BY: Author

CHECKED BY: Checker

PROJ. NO: 170641

DRAWING NO:

A-1.2 PDR

NOTE:
 COLORED ELEVATIONS AND PERSPECTIVES WERE SUBMITTED FOR PDR. SEE BLACK AND WHITE ELEVATIONS ON SHEETS A2.00, A2.01, AND A2.02 FOR CURRENT MATERIAL NOTES AND AREAS

- EXTERIOR ELEVATION KEY**
- BAL1 PREMANUFACTURED ALUMINUM BALCONY WITH PICKET GUARD RAIL
 - BAL2 PREMANUFACTURED FRENCH FRENCH BALCONY
 - BA1 BRICK ACCENT (RECESSED BANDING)
 - BA2 BRICK ACCENT (COLOR VARIATION)
 - B1 NORMAN BRICK
 - B2 THIN BRICK
 - C COLORED CONCRETE WITH RUBBED FINISH
 - CA CANOPY
 - CF PREFINISHED METAL CAP FLASHING
 - CJ CONTROL JOINT
 - CO PREFINISHED METAL CORNICE
 - CS CAST STONE SILL
 - CW CAST STONE WALL CAP
 - EC EYEBROW CANOPY - PREFINISHED METAL PANEL
 - F FENCE (SEE LANDSCAPE)
 - FCP1 5/8" FIBER CEMENT PANEL WITH ALUMINUM REVEALS
 - FCP2 5/16" FIBER CEMENT PANEL WITH ALUMINUM REVEALS
 - G ALUMINUM GUARD RAIL
 - MF METAL SILL FLASHING
 - ML MECHANICAL LOUVER - MATCH COLOR TO WALL
 - MP METAL PANEL
 - OH OVERHEAD DOOR
 - PC1 COLORED PRECAST CONCRETE
 - PC2 GRAY PRECAST CONCRETE
 - RW RETAINING WALL (SEE LANDSCAPE)
 - S1 BLADE SIGN - DOUBLE SIDED (12 SF)
 - SF ALUMINUM STOREFRONT SYSTEM
 - W FIBERGLASS WINDOW
 - WP WOOD PLANK PATIO PARTITION
- NOTE: THE EXISTING MANSION IS CLAD IN SANDSTONE WHICH WILL REMAIN AND BE RESTORED



**PERFORMANCE
DRIVEN DESIGN.**
 LHBcorp.com
 701 Washington Ave. N. Ste 200 | Minneapolis, MN 55401 | 612.338.2029



2 East Elevation - Overall PDR
 1/16" = 1'-0"



1 EAST ELEVATION
 1/8" = 1'-0"

CLIENT:
W+Noordijk, inc.

528 Hennepin Avenue
 The Cowles Center - Studio 418
 Minneapolis, MN 55403

THIS SQUARE APPEARS 1/2"x1/2" ON FULL SIZE SHEETS		
2	8/31/18	LUVA SUBMITTAL
1	7/23/18	CITY PDR SUBMITTAL
NO	DATE	ISSUED FOR
NO	DATE	REVISION

**PRELIMINARY
NOT FOR CONSTRUCTION
09/19/18**

COPYRIGHT 2017 BY LHB, INC. ALL RIGHTS RESERVED.
 PROJECT NAME:
**H. ALDEN SMITH HOUSE &
APARTMENTS**
 1403 HARMON PLACE
 MINNEAPOLIS, MN 55403

DRAWING TITLE:
BUILDING ELEVATIONS

FILE: XXX
 DRAWN BY: Author
 CHECKED BY: Checker
 PROJ. NO: 170541
 DRAWING NO:
A-2.0 PDR

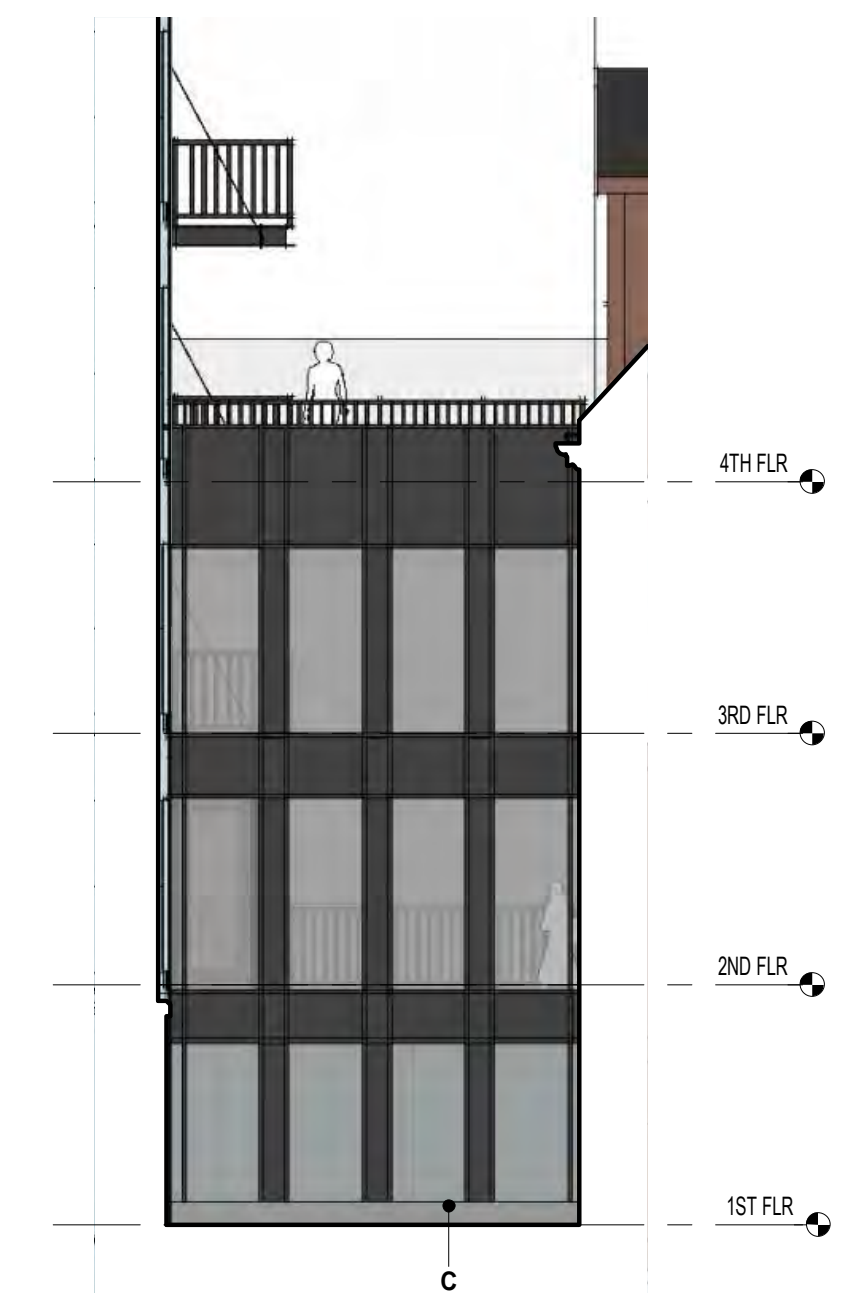
C:\Users\admasdo\Documents\170541 Alden Smith Apartments A18 Central_AD\Madso.rvt
 9/17/2018 4:43:25 PM

NOTE:
 COLORED ELEVATIONS AND PERSPECTIVES WERE SUBMITTED FOR PDR. SEE BLACK AND WHITE ELEVATIONS ON SHEETS A2.00, A2.01, AND A2.02 FOR CURRENT MATERIAL NOTES AND AREAS

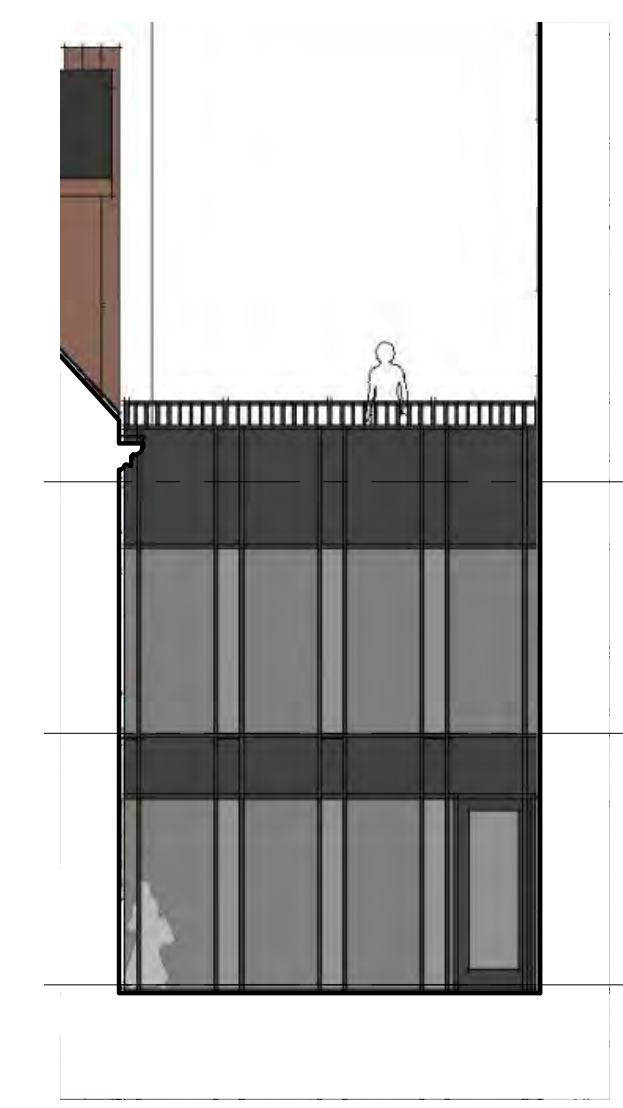
EXTERIOR ELEVATION KEY

- BAL1 PREMANUFACTURED ALUMINUM BALCONY WITH PICKET GUARD RAIL
- BAL2 PREMANUFACTURED FRENCH FRENCH BALCONY
- BA1 BRICK ACCENT (RECESSED BANDING)
- BA2 BRICK ACCENT (COLOR VARIATION)
- B1 NORMAN BRICK
- B2 THIN BRICK
- C COLORED CONCRETE WITH RUBBED FINISH
- CA CANOPY
- CF PREFINISHED METAL CAP FLASHING
- CJ CONTROL JOINT
- CO PREFINISHED METAL CORNICE
- CS CAST STONE SILL
- CW CAST STONE WALL CAP
- EC EYEBROW CANOPY - PREFINISHED METAL PANEL
- F FENCE (SEE LANDSCAPE)
- FCP1 5/8" FIBER CEMENT PANEL
- FCP2 5/8" FIBER CEMENT PANEL WITH ALUMINUM REVEALS
- G ALUMINUM GUARD RAIL
- MF METAL SILL FLASHING
- ML MECHANICAL LOUVER - MATCH COLOR TO WALL
- MP METAL PANEL
- OH OVERHEAD DOOR
- PC1 COLORED PRECAST CONCRETE
- PC2 GRAY PRECAST CONCRETE
- RW RETAINING WALL (SEE LANDSCAPE)
- S1 BLADE SIGN - DOUBLE SIDED (12 SF)
- SF ALUMINUM STOREFRONT SYSTEM
- W FIBERGLASS WINDOW
- WP WOOD PLANK PATIO PARTITION

NOTE: THE EXISTING MANSION IS CLAD IN SANDSTONE WHICH WILL REMAIN AND BE RESTORED



2 Link Elevation - East PDR
 1/8" = 1'-0"



1 Link Elevation - West PDR
 1/8" = 1'-0"



4 NORTH ELEVATION/ SECTION
 1/8" = 1'-0"



3 NORTH ELEVATION
 1/8" = 1'-0"

LHB
PERFORMANCE DRIVEN DESIGN.
 LHBcorp.com
 701 Washington Ave. N. Ste 200 | Minneapolis, MN 55401 | 612.338.2029

CLIENT:
W+Noordijk, inc.

528 Hennepin Avenue
 The Cowles Center - Studio 418
 Minneapolis, MN 55403

THIS SQUARE APPEARS 1/2"x1/2" ON FULL SIZE SHEETS

NO	DATE	ISSUED FOR
2	8/31/18	LUU SUBMITTAL
1	7/23/18	CITY PDR SUBMITTAL
NO	DATE	ISSUED FOR

NO	DATE	REVISION

PRELIMINARY
NOT FOR CONSTRUCTION
 09/19/18

COPYRIGHT 2017 BY LHB, INC. ALL RIGHTS RESERVED.
 PROJECT NAME:
H. ALDEN SMITH HOUSE & APARTMENTS
 1403 HARMON PLACE
 MINNEAPOLIS, MN 55403

DRAWING TITLE:
BUILDING ELEVATIONS

FILE: XXX
 DRAWN BY: Author
 CHECKED BY: Checker
 PROJ. NO: 170541
 DRAWING NO:
A-2.2 PDR

NOTE:
 COLORED ELEVATIONS AND PERSPECTIVES WERE SUBMITTED FOR PDR. SEE BLACK AND WHITE ELEVATIONS ON SHEETS A2.00, A2.01, AND A2.02 FOR CURRENT MATERIAL NOTES AND AREAS



1 Southwest Perspective
 3/4" = 1'-0"



2 Northeast Perspective
 3/4" = 1'-0"



4 Entry Perspective
 3/4" = 1'-0"



3 Southeast Perspective
 3/4" = 1'-0"

LHB
PERFORMANCE DRIVEN DESIGN.
 LHBcorp.com
 701 Washington Ave. N. Ste 200 | Minneapolis, MN 55401 | 612.338.2029

CLIENT:
W+Noordijk, inc.

528 Hennepin Avenue
 The Cowles Center - Studio 418
 Minneapolis, MN 55403

THIS SQUARE APPEARS 1/2"x1/2" ON FULL SIZE SHEETS

NO	DATE	ISSUED FOR
2	8/31/18	LUA SUBMITTAL
1	7/23/18	CITY PDR SUBMITTAL
NO	DATE	ISSUED FOR

PRELIMINARY
NOT FOR CONSTRUCTION
 09/19/18

COPYRIGHT 2017 BY LHB, INC. ALL RIGHTS RESERVED.
 PROJECT NAME:
H. ALDEN SMITH HOUSE & APARTMENTS
 1403 HARMON PLACE
 MINNEAPOLIS, MN 55403

DRAWING TITLE:
PERSPECTIVES

FILE: XXX
 DRAWN BY: Author
 CHECKED BY: Checker
 PROJ. NO: 170541
 DRAWING NO: **A-3.0 PDR**



EXTERIOR ELEVATION KEY

- BAL1 PREMANUFACTURED ALUMINUM BALCONY WITH PICKET GUARD RAIL
 - BAL2 PREMANUFACTURED FRENCH FRENCH BALCONY
 - BA1 BRICK ACCENT (RECESSED BANDING)
 - BA2 BRICK ACCENT (COLOR VARIATION)
 - B1 NORMAN BRICK
 - B2 THIN BRICK
 - C COLORED CONCRETE WITH RUBBED FINISH
 - CA CANOPY
 - CF PREFINISHED METAL CAP FLASHING
 - CJ CONTROL JOINT
 - CO PREFINISHED METAL CORNICE
 - CS CAST STONE SILL
 - CW CAST STONE WALL CAP
 - EC EYEBROW CANOPY - PREFINISHED METAL PANEL
 - F FENCE (SEE LANDSCAPE)
 - FCP1 5/8" FIBER CEMENT PANEL
 - FCP2 5/16" FIBER CEMENT PANEL WITH ALUMINUM REVEALS
 - G ALUMINUM GUARD RAIL
 - MF METAL SILL FLASHING
 - ML MECHANICAL LOUVER - MATCH COLOR TO WALL
 - MP METAL PANEL
 - OH OVERHEAD DOOR
 - PC1 COLORED PRECAST CONCRETE
 - PC2 GRAY PRECAST CONCRETE
 - RW RETAINING WALL (SEE LANDSCAPE)
 - S1 BLADE SIGN - DOUBLE SIDED (12 SF)
 - SF ALUMINUM STOREFRONT SYSTEM
 - W FIBERGLASS WINDOW
 - WP WOOD PLANK PATIO PARTITION
- NOTE: THE EXISTING MANSION IS CLAD IN SANDSTONE WHICH WILL REMAIN AND BE RESTORED

LHB
PERFORMANCE DRIVEN DESIGN.
 LHBcorp.com
 701 Washington Ave. N. Ste 200 | Minneapolis, MN 55401 | 612.338.2029

2 East Elevation - Overall
 1/16" = 1'-0"

MATERIAL CALCULATIONS - EAST ELEVATION

Type Mark	Description	Area (SF)	Percentage
B1, B2	NORMAN BRICK AND THIN BRICK	5643	39%
C	CONCRETE (PRECAST & COLORED)	279	2%
CF, CO, MF, MP	PREFINISHED METAL COMPONENTS	693	5%
FCP1	5/8" FIBER CEMENT PANELS	2879	20%
FCP2	5/16" FIBER CEMENT PANELS WITH REVEALS	259	2%
ML, OH	LOUVERS & METAL DOORS	92	1%
W	WINDOWS & STOREFRONT	4450	31%
		14295	100%

CLIENT:
W+Noordijk, inc.
 528 Hennepin Avenue
 The Cowles Center - Studio 418
 Minneapolis, MN 55403

THIS SQUARE APPEARS 1/2"x1/2" ON FULL SIZE SHEETS

NO	DATE	ISSUED FOR
2	8/31/18	LUU SUBMITTAL
1	7/23/18	CITY PDR SUBMITTAL
NO		

NO	DATE	REVISION

PRELIMINARY
NOT FOR CONSTRUCTION
 09/19/18

COPYRIGHT 2017 BY LHB, INC. ALL RIGHTS RESERVED.
 PROJECT NAME:
H. ALDEN SMITH HOUSE & APARTMENTS
 1403 HARMON PLACE
 MINNEAPOLIS, MN 55403

DRAWING TITLE:
EXTERIOR ELEVATIONS - East Elevation

FILE: XXX
 DRAWN BY: ADM
 CHECKED BY: Checker
 PROJ. NO: 170641
 DRAWING NO:

A2.00



1 EAST ELEVATION
 1/8" = 1'-0"

C:\Users\admads\Documents\170641 Alden Smith Apartments A18 Central_AD\Modso.rvt
 9/17/2018 4:41:50 PM



2 West Elevation - Overall
1/16" = 1'-0"

EXTERIOR ELEVATION KEY

- BAL1 PREMANUFACTURED ALUMINUM BALCONY WITH PICKET GUARD RAIL
- BAL2 PREMANUFACTURED FRENCH FRENCH BALCONY
- BA1 BRICK ACCENT (RECESSED BANDING)
- BA2 BRICK ACCENT (COLOR VARIATION)
- B1 NORMAN BRICK
- B2 THIN BRICK
- C COLORED CONCRETE WITH RUBBED FINISH
- CA CANOPY
- CF PREFINISHED METAL CAP FLASHING
- CJ CONTROL JOINT
- CO PREFINISHED METAL CORNICE
- CS CAST STONE SILL
- CW CAST STONE WALL CAP
- EC EYEBROW CANOPY - PREFINISHED METAL PANEL
- F FENCE (SEE LANDSCAPE)
- FCP1 5/8" FIBER CEMENT PANEL
- FCP2 5/16" FIBER CEMENT PANEL WITH ALUMINUM REVEALS
- G ALUMINUM GUARD RAIL
- MF METAL SILL FLASHING
- ML MECHANICAL LOUVER - MATCH COLOR TO WALL
- MP METAL PANEL
- OH OVERHEAD DOOR
- PC1 COLORED PRECAST CONCRETE
- PC2 GRAY PRECAST CONCRETE
- RW RETAINING WALL (SEE LANDSCAPE)
- S1 BLADE SIGN - DOUBLE SIDED (12 SF)
- SF ALUMINUM STOREFRONT SYSTEM
- W FIBERGLASS WINDOW
- WP WOOD PLANK PATIO PARTITION

NOTE: THE EXISTING MANSION IS CLAD IN SANDSTONE WHICH WILL REMAIN AND BE RESTORED

MATERIAL CALCULATIONS - WEST ELEVATION

Type Mark	Description	Area (SF)	Percentage
B1, B2	NORMAN BRICK AND THIN BRICK	303	2%
C	CONCRETE (PRECAST & COLORED)	2012	14%
CF, CO, MF, MP	PREFINISHED METAL COMPONENTS	650	5%
FCP1	5/8" FIBER CEMENT PANELS	6029	42%
FCP2	5/16" FIBER CEMENT PANELS WITH REVEALS	1493	10%
ML, OH	LOUVERS & METAL DOORS	408	3%
W	WINDOWS & STOREFRONT	3361	24%
		14256	100%

PERFORMANCE DRIVEN DESIGN.
LHBcorp.com
701 Washington Ave. N. Ste 200 | Minneapolis, MN 55401 | 612.338.2029

CLIENT:
W+Noordijk, inc.
528 Hennepin Avenue
The Cowles Center - Studio 418
Minneapolis, MN 55403

THIS SQUARE APPEARS 1/2"x1/2" ON FULL SIZE SHEETS

NO	DATE	REVISION
2	8/31/18	LUVA SUBMITTAL
1	7/23/18	CITY PDR SUBMITTAL
NO	DATE	ISSUED FOR
NO	DATE	REVISION

PRELIMINARY
NOT FOR CONSTRUCTION
09/19/18

COPYRIGHT 2017 BY LHB, INC. ALL RIGHTS RESERVED.
PROJECT NAME:
H. ALDEN SMITH HOUSE & APARTMENTS
1403 HARMON PLACE
MINNEAPOLIS, MN 55403

DRAWING TITLE:
EXTERIOR ELEVATIONS - West Elevation

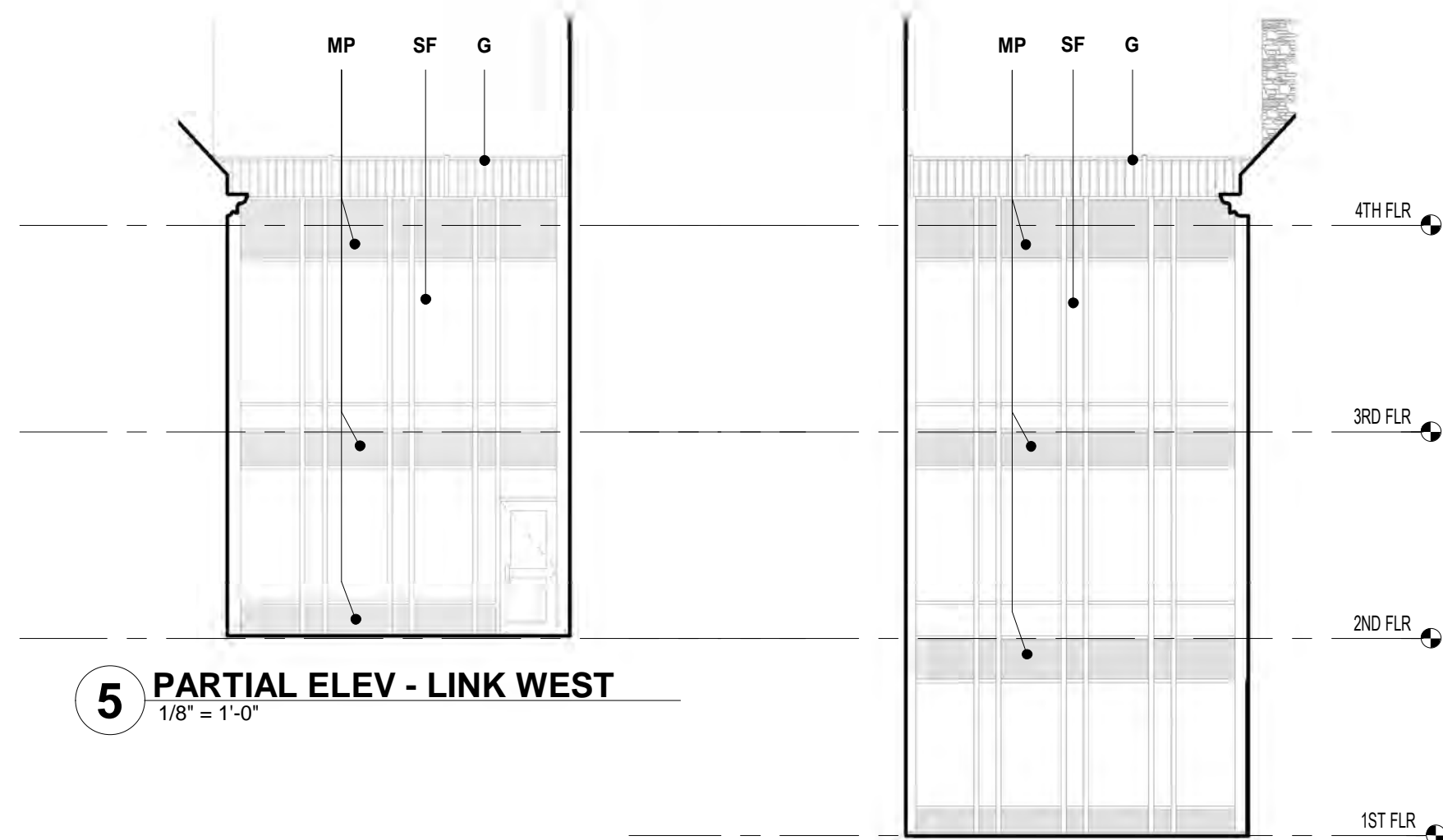
FILE: XXX
DRAWN BY: ADM
CHECKED BY: Checker
PROJ. NO: 170541
DRAWING NO:

A2.01



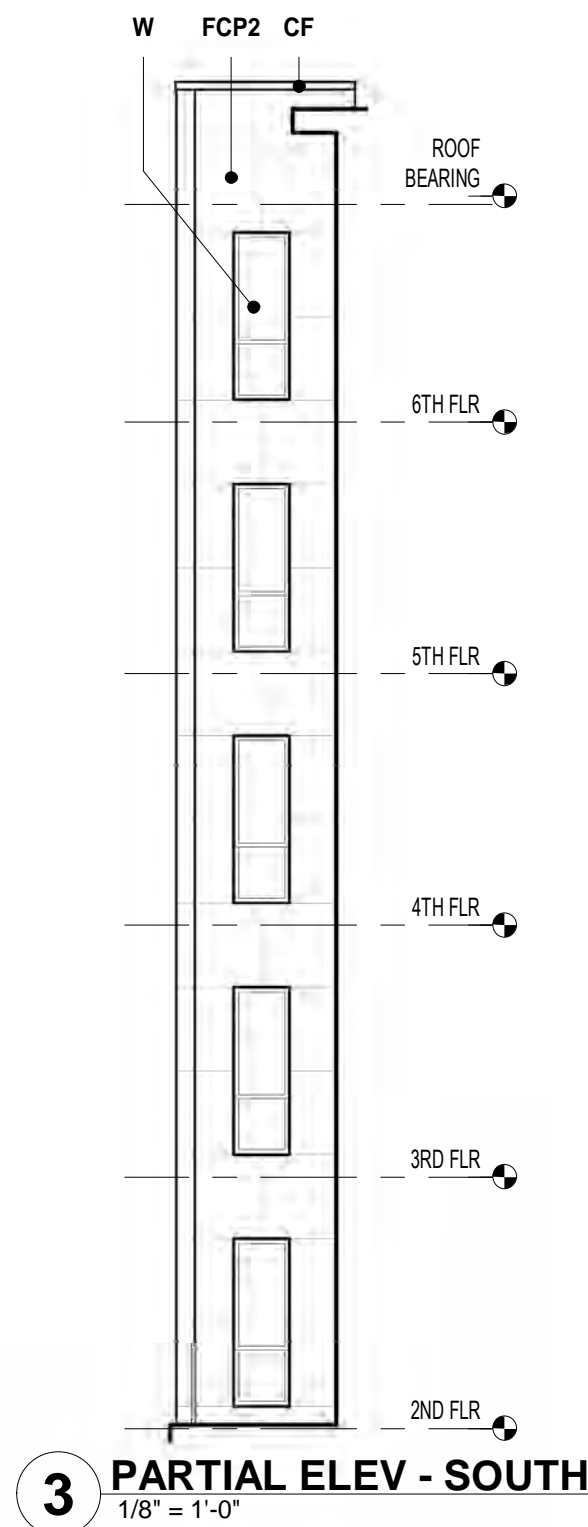
1 WEST ELEVATION
1/8" = 1'-0"

C:\Users\admadsoc\Documents\170541 Alden Smith Apartments A18 Central_ADMadsoc.rvt 9/17/2018 4:42:03 PM

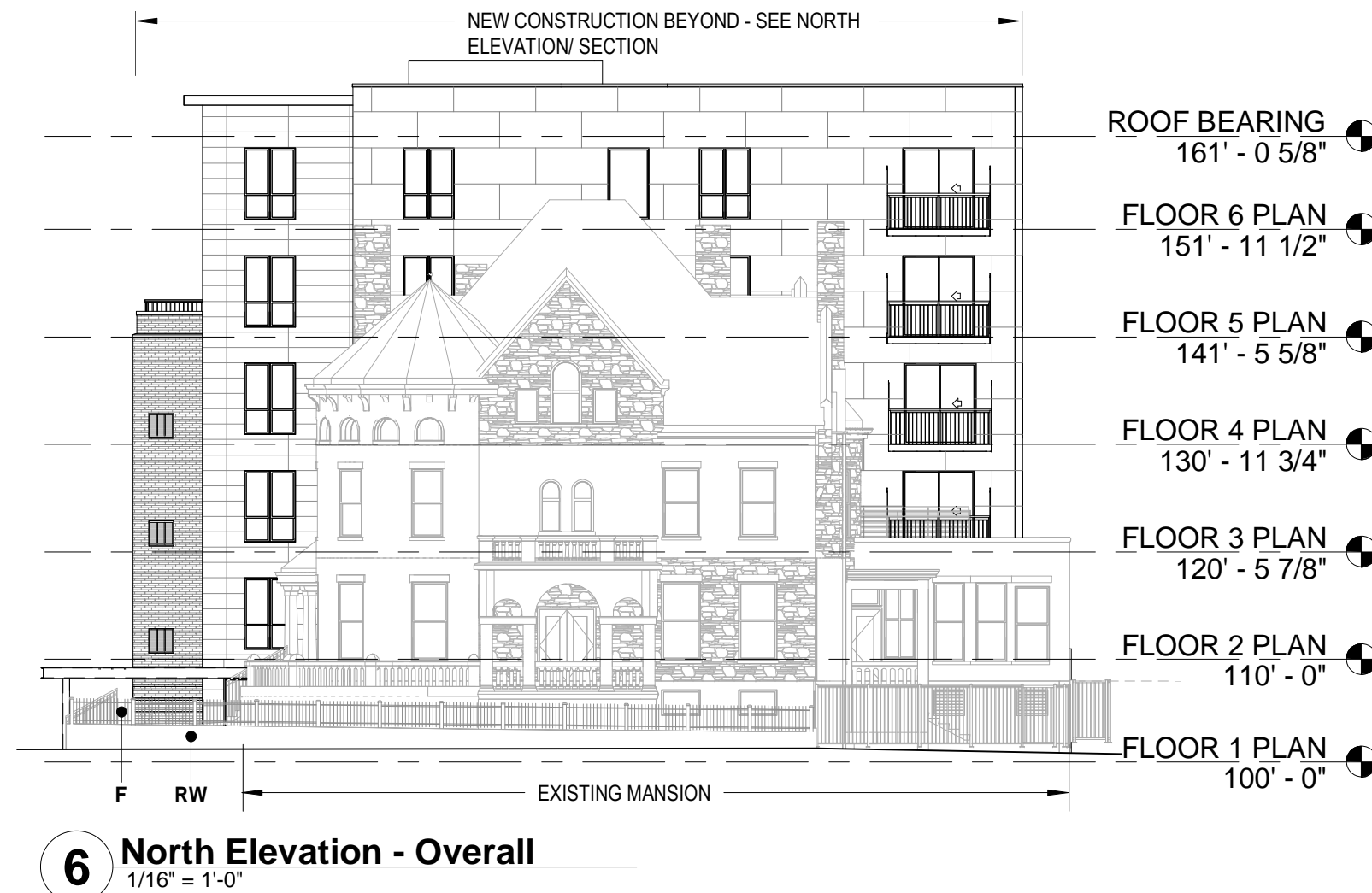


5 PARTIAL ELEV - LINK WEST
1/8" = 1'-0"

4 PARTIAL ELEV - LINK EAST
1/8" = 1'-0"



3 PARTIAL ELEV - SOUTH
1/8" = 1'-0"



6 North Elevation - Overall
1/16" = 1'-0"

EXTERIOR ELEVATION KEY	
BAL1	PREMANUFACTURED ALUMINUM BALCONY WITH PICKET GUARD RAIL
BAL2	PREMANUFACTURED FRENCH FRENCH BALCONY
BA1	BRICK ACCENT (RECESSED BANDING)
BA2	BRICK ACCENT (COLOR VARIATION)
B1	NORMAN BRICK
B2	THIN BRICK
C	COLORLED CONCRETE WITH RUBBED FINISH
CA	CANOPY
CF	PREFINISHED METAL CAP FLASHING
CJ	CONTROL JOINT
CO	PREFINISHED METAL CORNICE
CS	CAST STONE SILL
CW	CAST STONE WALL CAP
EC	EYEBROW CANOPY - PREFINISHED METAL PANEL
F	FENCE (SEE LANDSCAPE)
FCP1	5/8" FIBER CEMENT PANEL
FCP2	5/16" FIBER CEMENT PANEL WITH ALUMINUM REVEALS
G	ALUMINUM GUARD RAIL
MF	METAL SILL FLASHING
ML	MECHANICAL LOUVER - MATCH COLOR TO WALL
MP	METAL PANEL
OH	OVERHEAD DOOR
PC1	COLORLED PRECAST CONCRETE
PC2	GRAY PRECAST CONCRETE
RW	RETAINING WALL (SEE LANDSCAPE)
S1	BLADE SIGN - DOUBLE SIDED (12 SF)
SF	ALUMINUM STOREFRONT SYSTEM
W	FIBERGLASS WINDOW
WP	WOOD PLANK PATIO PARTITION

NOTE: THE EXISTING MANSION IS CLAD IN SANDSTONE WHICH WILL REMAIN AND BE RESTORED

MATERIAL CALCULATIONS - NORTH ELEVATION/ SECTION			
Type Mark	Description	Area (SF)	Percentage
B1, B2	NORMAN BRICK AND THIN BRICK	277	6%
CF, CO, MF, MP	PREFINISHED METAL COMPONENTS	40	1%
FCP1	5/8" FIBER CEMENT PANELS	676	14%
FCP2	5/16" FIBER CEMENT PANELS WITH REVEALS	2708	56%
ML, OH	LOUVERS & METAL DOORS	18	0%
W	WINDOWS & STOREFRONT	1155	24%
		4874	100%

MATERIAL CALCULATIONS - SOUTH ELEVATION			
Type Mark	Description	Area (SF)	Percentage
B1, B2	NORMAN BRICK AND THIN BRICK	1864	32%
C	CONCRETE (PRECAST & COLORED)	465	8%
CF, CO, MF, MP	PREFINISHED METAL COMPONENTS	239	4%
FCP1	5/8" FIBER CEMENT PANELS	1541	27%
ML, OH	LOUVERS & METAL DOORS	136	2%
W	WINDOWS & STOREFRONT	1535	27%
		5780	100%



1 NORTH ELEVATION/ SECTION
1/8" = 1'-0"



2 SOUTH ELEVATION
1/8" = 1'-0"

CLIENT:
W+Noordijk, inc.

528 Hennepin Avenue
The Cowles Center - Studio 418
Minneapolis, MN 55403

THIS SQUARE APPEARS 1/2"x1/2" ON FULL SIZE SHEETS			
2	8/31/18	LUVA SUBMITTAL	
1	7/23/18	CITY PDR SUBMITTAL	
NO	DATE	ISSUED FOR	
NO	DATE	REVISION	

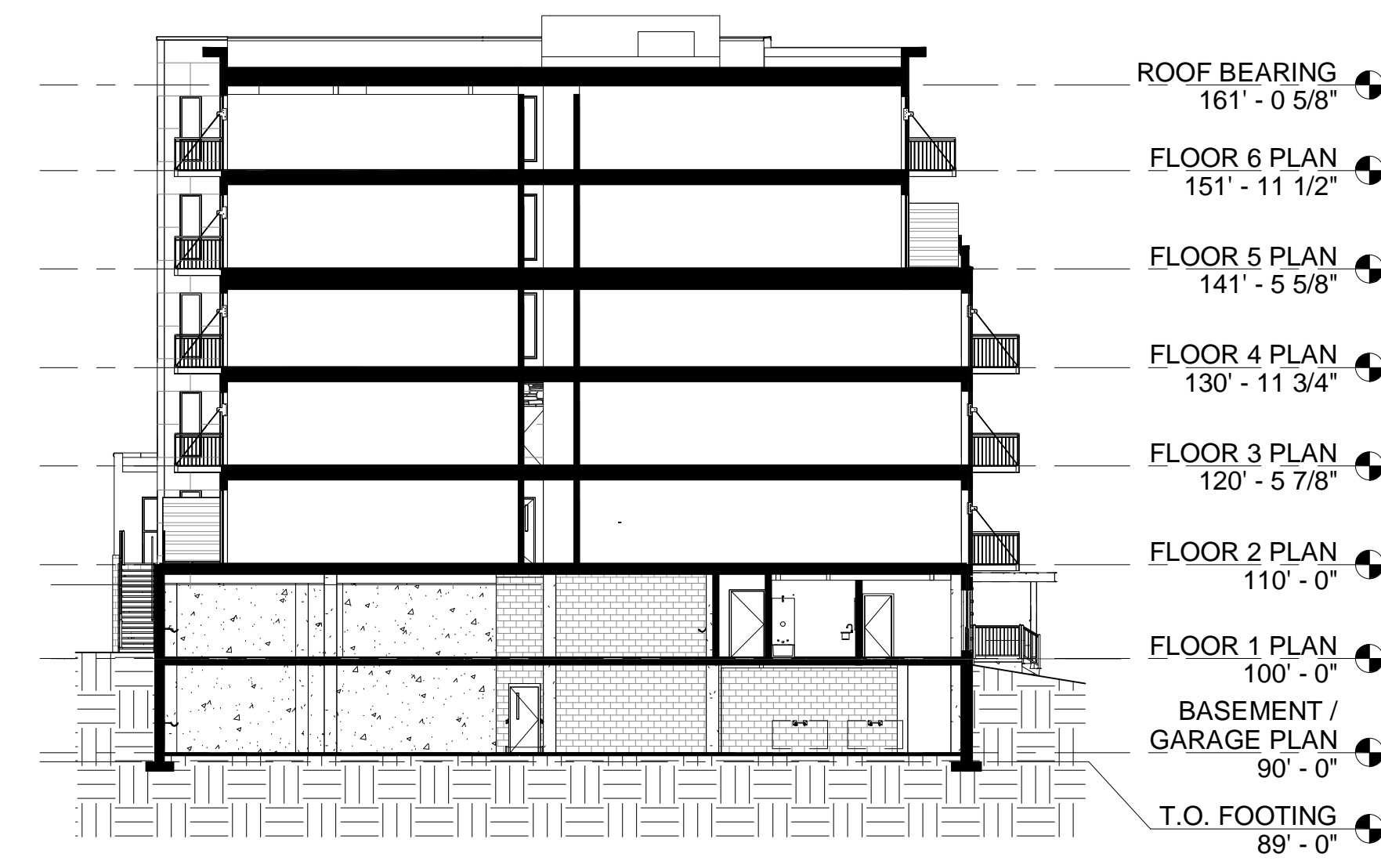
PRELIMINARY
NOT FOR CONSTRUCTION
09/19/18

COPYRIGHT 2017 BY LHB, INC. ALL RIGHTS RESERVED.
PROJECT NAME:
H. ALDEN SMITH HOUSE & APARTMENTS
1403 HARMON PLACE
MINNEAPOLIS, MN 55403

DRAWING TITLE:
EXTERIOR ELEVATIONS - North, South & Link Elevations

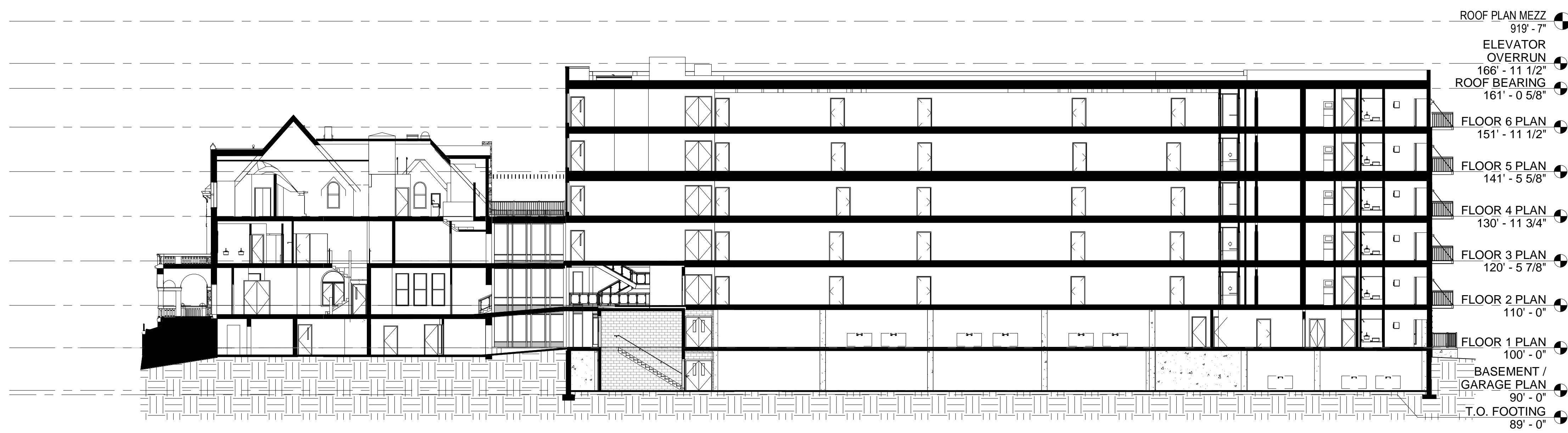
FILE: XXX
DRAWN BY: Author
CHECKED BY: Checker
PROJ. NO: 170541
DRAWING NO:

C:\Users\admaido\Documents\170541 Alden Smith Apartments A18 Central_AD\Madiso.rvt
9/17/2018 4:42:11 PM



2 EAST WEST SECTION - APARTMENTS
1/16" = 1'-0"

- ROOF BEARING
161' - 0 5/8"
- FLOOR 6 PLAN
151' - 11 1/2"
- FLOOR 5 PLAN
141' - 5 5/8"
- FLOOR 4 PLAN
130' - 11 3/4"
- FLOOR 3 PLAN
120' - 5 7/8"
- FLOOR 2 PLAN
110' - 0"
- FLOOR 1 PLAN
100' - 0"
- BASEMENT / GARAGE PLAN
90' - 0"
- T.O. FOOTING
89' - 0"



1 NORTH SOUTH SECTION
1/16" = 1'-0"

- ROOF PLAN MEZZ
91' - 7"
- ELEVATOR OVERRUN
166' - 11 1/2"
- ROOF BEARING
161' - 0 5/8"
- FLOOR 6 PLAN
151' - 11 1/2"
- FLOOR 5 PLAN
141' - 5 5/8"
- FLOOR 4 PLAN
130' - 11 3/4"
- FLOOR 3 PLAN
120' - 5 7/8"
- FLOOR 2 PLAN
110' - 0"
- FLOOR 1 PLAN
100' - 0"
- BASEMENT / GARAGE PLAN
90' - 0"
- T.O. FOOTING
89' - 0"

LHB
PERFORMANCE
DRIVEN DESIGN.
LHBcorp.com
701 Washington Ave. N. Ste 200 | Minneapolis, MN 55401 | 612.338.2029

CLIENT:
W+Noordijk, inc.
528 Hennepin Avenue
The Cowles Center - Studio 418
Minneapolis, MN 55403

THIS SQUARE APPEARS 1/2"x1/2"
ON FULL SIZE SHEETS

NO	DATE	ISSUED FOR
2	8/31/18	LUA SUBMITTAL
1	7/23/18	CITY PDR SUBMITTAL

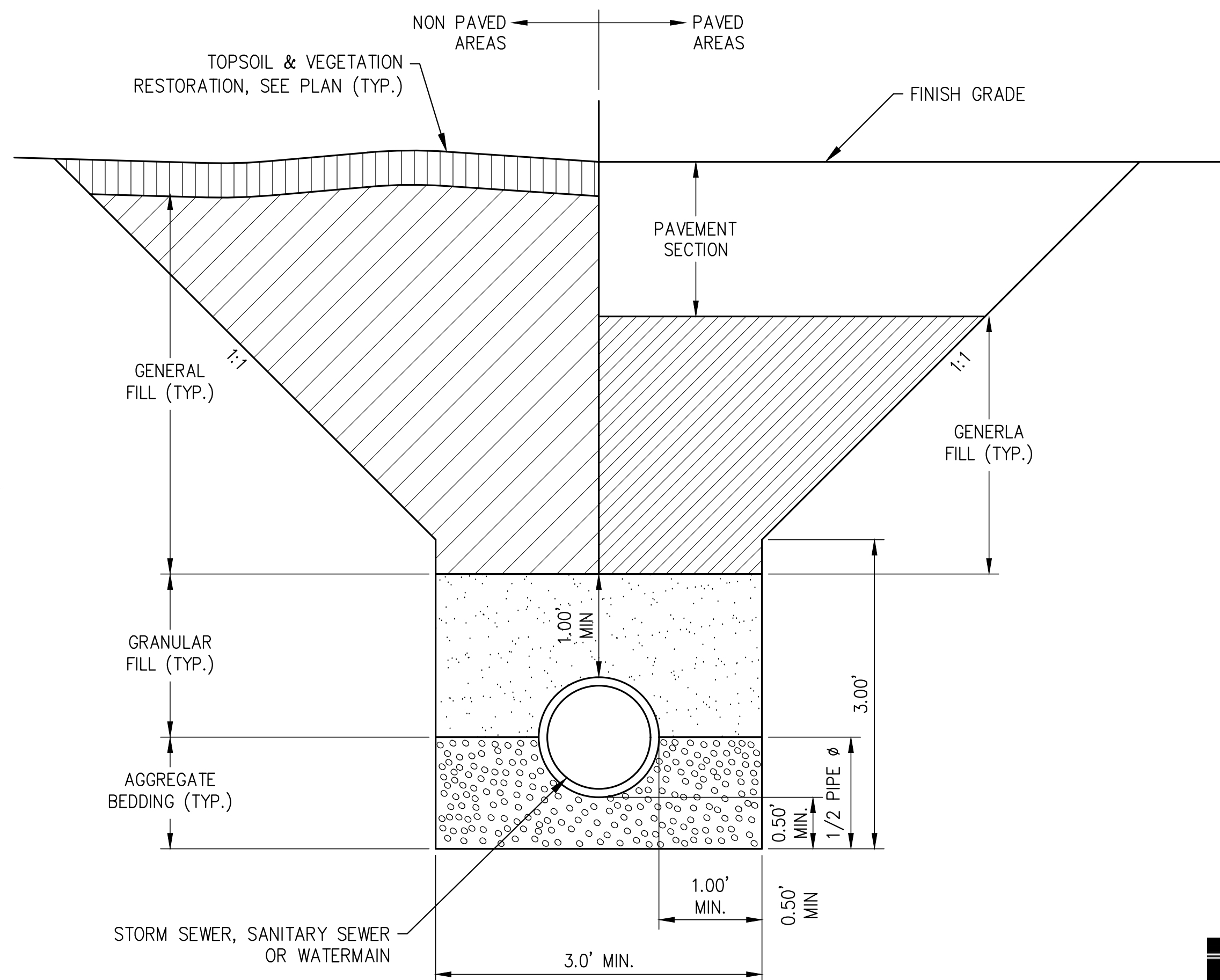
NO	DATE	REVISION

PRELIMINARY
NOT FOR CONSTRUCTION
09/19/18

COPYRIGHT 2017 BY LHB, INC. ALL RIGHTS RESERVED.
PROJECT NAME:
H. ALDEN SMITH HOUSE & APARTMENTS
1403 HARMON PLACE
MINNEAPOLIS, MN 55403

DRAWING TITLE:
BUILDING SECTIONS

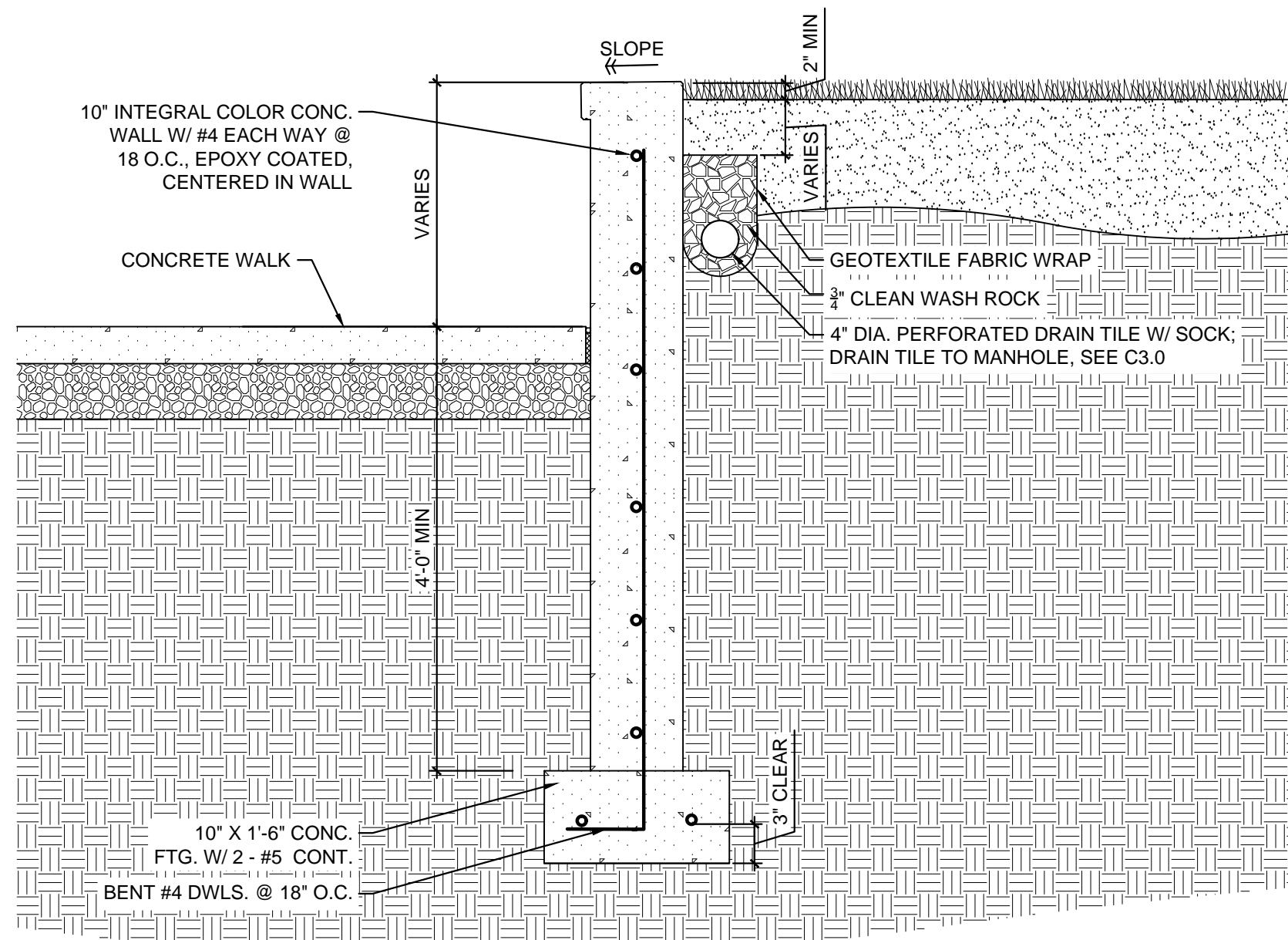
FILE: XXX
DRAWN BY: Author
CHECKED BY: Checker
PROJ. NO.: 170541
DRAWING NO.: **A3.00**



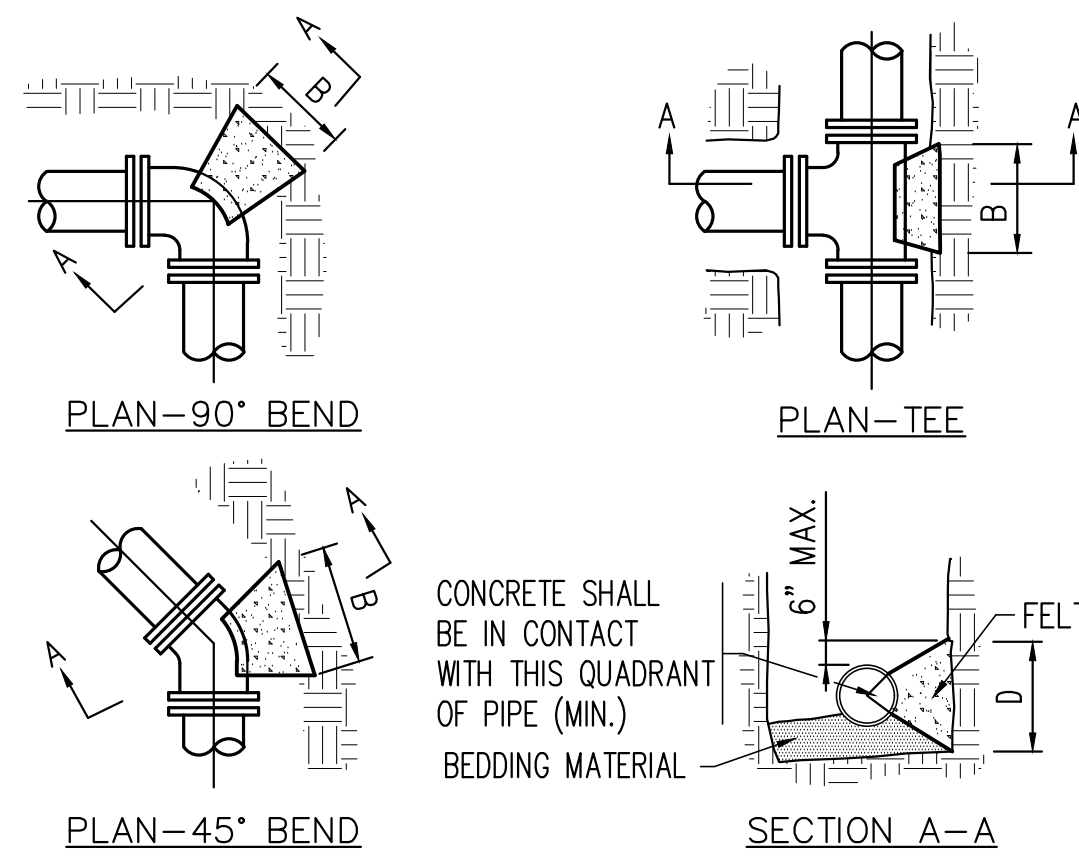
NOTE:

1. FOR WATER MAIN TRENCH IN STABLE DRY TRENCH CONDITIONS THE AGGREGATE BEDDING LAYER MAY BE ELIMINATED, GRANULAR FILL SHALL BE BACKFILLED TO 1ft MINIMUM ABOVE THE PIPE. IF TRENCH CONDITIONS ARE WET OR UNSTABLE THEN THE BEDDING LAYER SHALL BE USED.

1 PIPE BEDDING
NOT TO SCALE



4 POURED IN PLACE CONCRETE WALL
3/4" = 1'



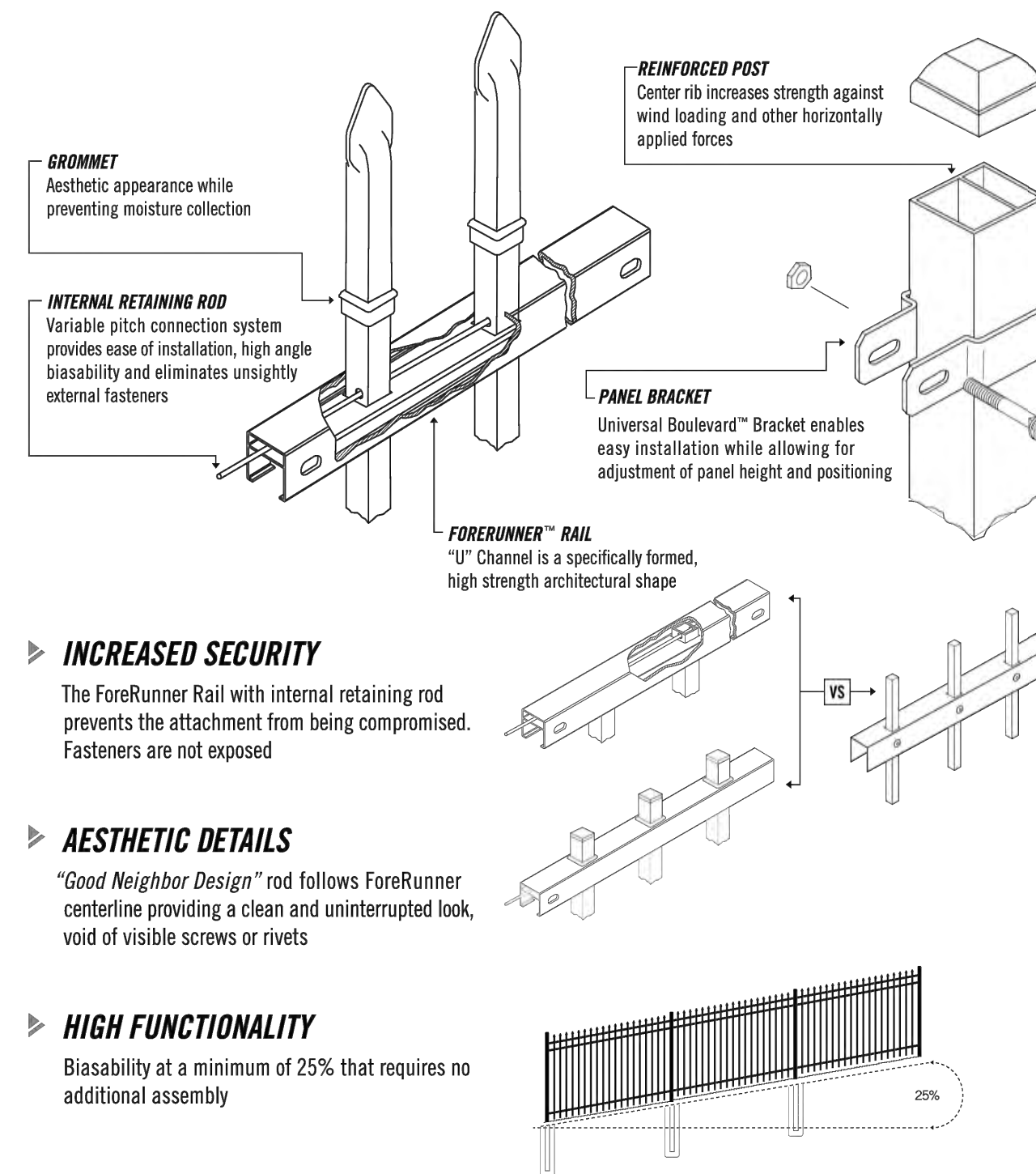
BEND OR BRANCH SIZE	BLOCKING DIMENSIONS							
	22 1/2° BENDS		45° BENDS		90° BENDS		TEES	
	B	D	B	D	B	D	B	D
6"	1'-0"	1'-0"	1'-0"	1'-0"	1'-4"	1'-2"	1'-3"	1'-0"
8"	1'-0"	1'-0"	1'-4"	1'-2"	1'-10"	1'-6"	1'-4"	1'-4"
12"	1'-4"	1'-4"	1'-10"	1'-10"	2'-8"	2'-3"	2'-3"	2'-0"

BLOCKING NOTES:

1. WOOD BLOCKING MAY BE USED IN LIEU OF CONCRETE BLOCKING FOR FITTINGS HAVING A SIZE OF 6" TO 12" PROVIDED THE AREA OF THE BLOCKING IN CONTACT WITH THE UNDISTURBED SOIL IS AT LEAST EQUAL TO THE AREA OF THE CONCRETE SHOWN IN THE TABLE.
2. DIMENSIONS IN THE TABLE ARE BASED ON A WATER PRESSURE OF 150 PSI AND AN EARTH RESISTANCE OF 2 TONS PER SQ. FT.
3. BLOCKING TO BE SET AGAINST UNDISTURBED SOIL.
4. CONCRETE SHALL BE GRADE B - SPEC. 2461. CONCRETE SHALL NOT INTERFERE WITH MECHANICAL JOINTS.

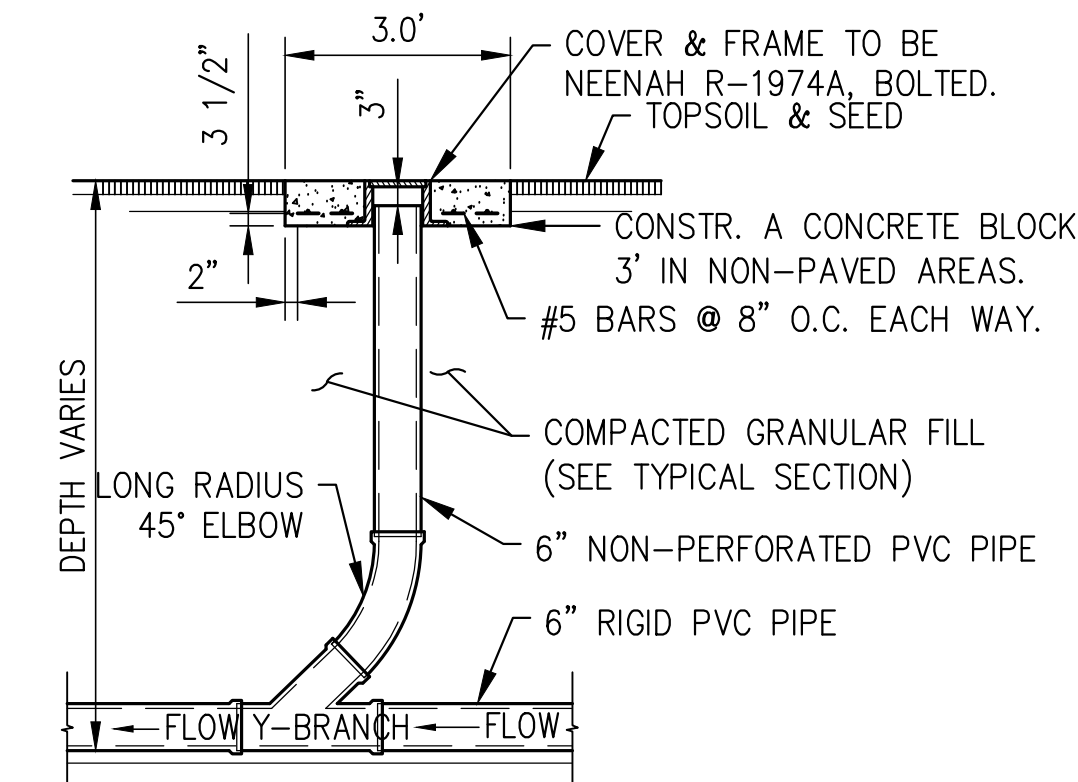
2 THRUST BLOCKS
NOT TO SCALE

NO RIVETS. NO SCREWS. NO WELDS.



ECHELON PLUS® | Ornamental Aluminum Fence

4 FENCE CUT SHEET



3 CLEANOUT
NOT TO SCALE



CLASSIC™

Echelon Plus Classic style boasts *traditional extended pickets* with an arrow-shaped spear. These pointed pickets act as a *visual warning to potential intruders.*

- ▶ 3 Rail / 4 Rail options available
- ▶ Flush or Standard bottom options available

Proposed fence style:



MAJESTIC™

Selected options: Black, three-rail, flush bottom

Echelon Plus Majestic has a *contemporary feel* that incorporates a *flush top rail* which produces a stately and streamlined appearance. This fence style *highlights the landscape* by blending with the surrounding architectural design.

- ▶ 3 Rail / 4 Rail options available
- ▶ Flush or Standard bottom options available



GENESIS™

Echelon Plus Genesis has *sleek lines* of unaltered square pickets that are *reminiscent of solid vertical bar wrought iron.* The extended flat-topped tips can also be accented with decorative finials to enhance the fence design.

- ▶ 3 Rail / 4 Rail options available
- ▶ Flush or Standard bottom options available

Learn more online at ameristarfence.com or by calling 888-333-3422



PERFORMANCE DRIVEN DESIGN.
LHBcorp.com

701 Washington Ave. N, Ste 200 | Minneapolis, MN 55401 | 612.338.2029

CLIENT:
W+Noordijk, inc.

528 Hennepin Avenue, Suite 418
Minneapolis, MN 55403

THIS SQUARE APPEARS 1/2" x 1/2" ON FULL SIZE SHEETS.

NO DATE ISSUED FOR

NO DATE REVISION

PRELIMINARY
NOT FOR CONSTRUCTION
09/19/2018

COPYRIGHT 2018 BY LHB, INC. ALL RIGHTS RESERVED.

PROJECT NAME:
H. ALDEN SMITH HOUSE & APARTMENTS

1403 Harmon Place
Minneapolis, MN 55403

DRAWING TITLE:
CIVIL DETAILS

FILE: J:\170641\600 Drawings\C1170641 C501 Details.dwg
DRAWN BY: DPG
CHECKED BY: JTC
PROJ. NO: 170641
DRAWING NO:

C506