

BERGER FOUNTAIN RESTORATION PROJECT

SUMMARY OF WINTER COVER DESIGN PROJECT W/DUNWOODY

MEMORANDUM OF UNDERSTANDING – MPLS PARK BOARD

NEXT STEPS

BERGER FOUNTAIN COMMITTEE

- Mary Bujold – Chair – Citizens for a Loring Park Community
- Jana Metge – Executive Director - Citizens for a Loring Park Community
- Dave Hile – Friends of Loring Park
- Richard Anderson – Citizens for a Loring Park Community
- Pat Davies – Loring Greenway
- Keith Ford – Loring Greenway
- Daniel Green, AIA – Miller Dunwiddie Architects – At Large
- Dot Bestler – Executive Director – Twin Cities Pride – At Large
- Colleen O'Dell – Minneapolis Parks Planning
- Julie Sandin – Minneapolis Parks

BERGER FOUNTAIN WINTER COVER FEEDBACK PARTICIPANTS

- Berger Fountain Committee Members
- Edith Holmen – Loring Park resident
- Judith Ericksen – Loring Park resident
- Mike Addy – Loring Park resident
- Stephen Gangstead – Loring Park resident
- Kia Thompson – Friends of Loring Park and Loring Park resident
- Jono Cowgill – Minneapolis Parks Commissioner – District 4

BERGER FOUNTAIN RESTORATION PROJECT

- To restore the Berger Fountain, an iconic Loring Park landmark, so that it can continue to provide enjoyment to residents and visitors of Loring Park for many years to come
- Identified and approved in earlier and current Loring Park Master Plans
- Approved in the Minneapolis Parks Master Plan (funding allocation – low priority)
- The condition of the Fountain has deteriorated substantially and the underlying mechanicals are at risk of failing.
- The exterior basin has cracked tiles, which are difficult to repair/replace

MEMORANDUM OF UNDERSTANDING W/ MINNEAPOLIS PARKS AND RECREATION BOARD

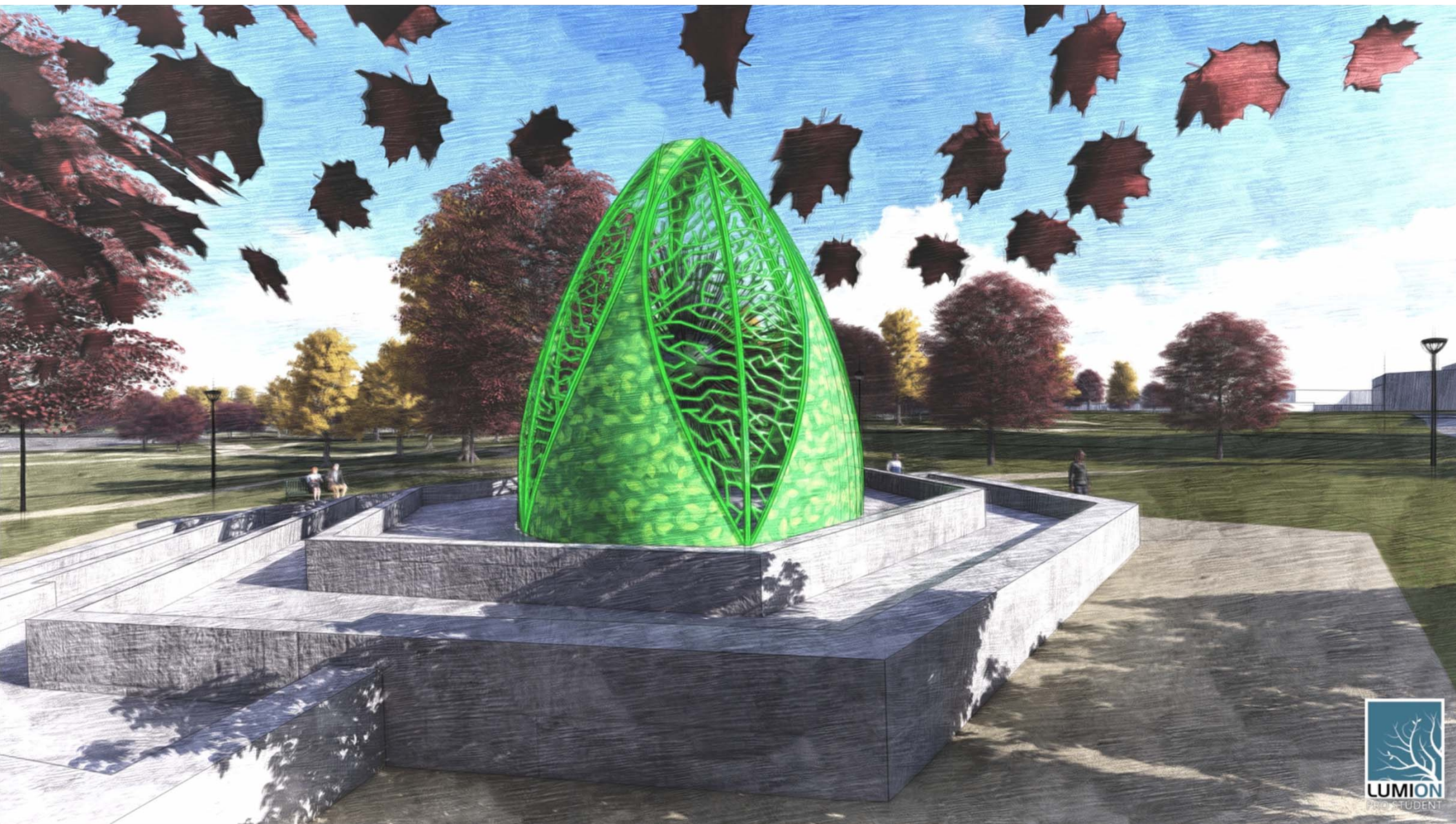
- The Berger Fountain Workgroup Committee prepared a draft Memorandum of Understanding to the MPRB to implement the restoration.
- The Memorandum was recently approved by MPRB and will be signed by CLPC and Friends and the MPRB. The document provides for an administrative and legal process for our organizations to work together to restore the Berger Fountain.
- Funding for the restoration of the Fountain would be the responsibility of CLPC and Friends through fundraising efforts to accomplish the goals in advance of MPRB's targeted funding allocation.
- We are contemplating our first public fundraising effort this summer. Additional fundraising options are being explored by the Committee, CLPC and Friends.

BERGER FOUNTAIN WINTER COVER DESIGN PROJECT

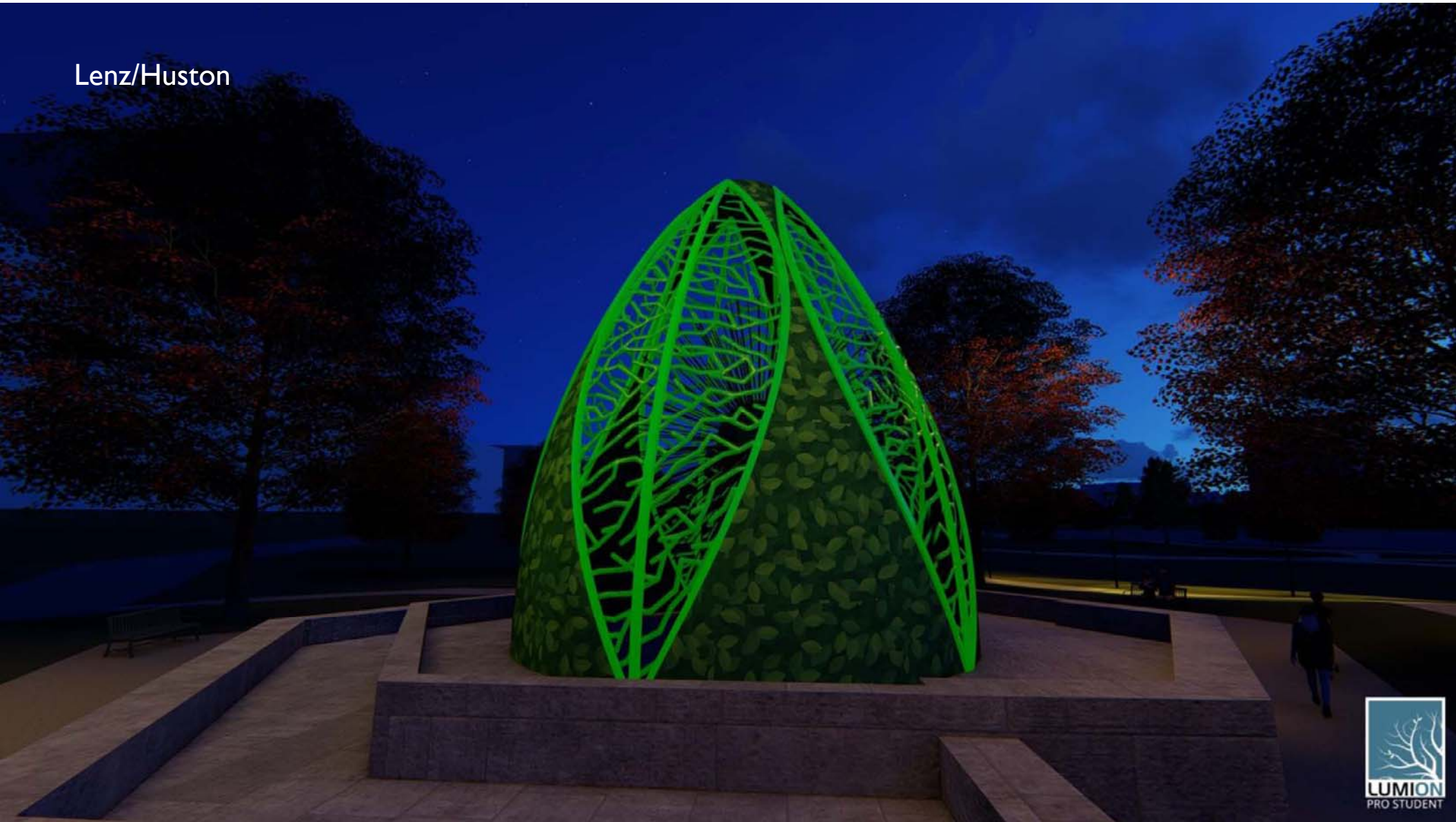
- Daniel Green, currently an at-large member of the Workgroup Committee, approached Dunwoody Architecture Department to see if the Winter Cover Design project could be completed as a student assignment.
- The assignment was accepted by Dunwoody and senior architecture students worked on options for a new winter cover for the Berger Fountain in addition to designing other features for Loring Park
- Four sessions were held with students, the Workgroup Committee and other residents/representatives of Loring Park and the Minneapolis Parks. These sessions took place from September through December 2018.
- The final student design projects have been presented in a Powerpoint Presentation and in model form.
- The Workgroup Committee met and selected four of the designs to target for further review and comment. These designs are presented to the group this evening.
- Comments will be compiled and review by the Workgroup Committee. The goal is to narrow the selection to two final designs which will be further analyzed for detailed costs, feasibility and production.

FOUR DESIGNS

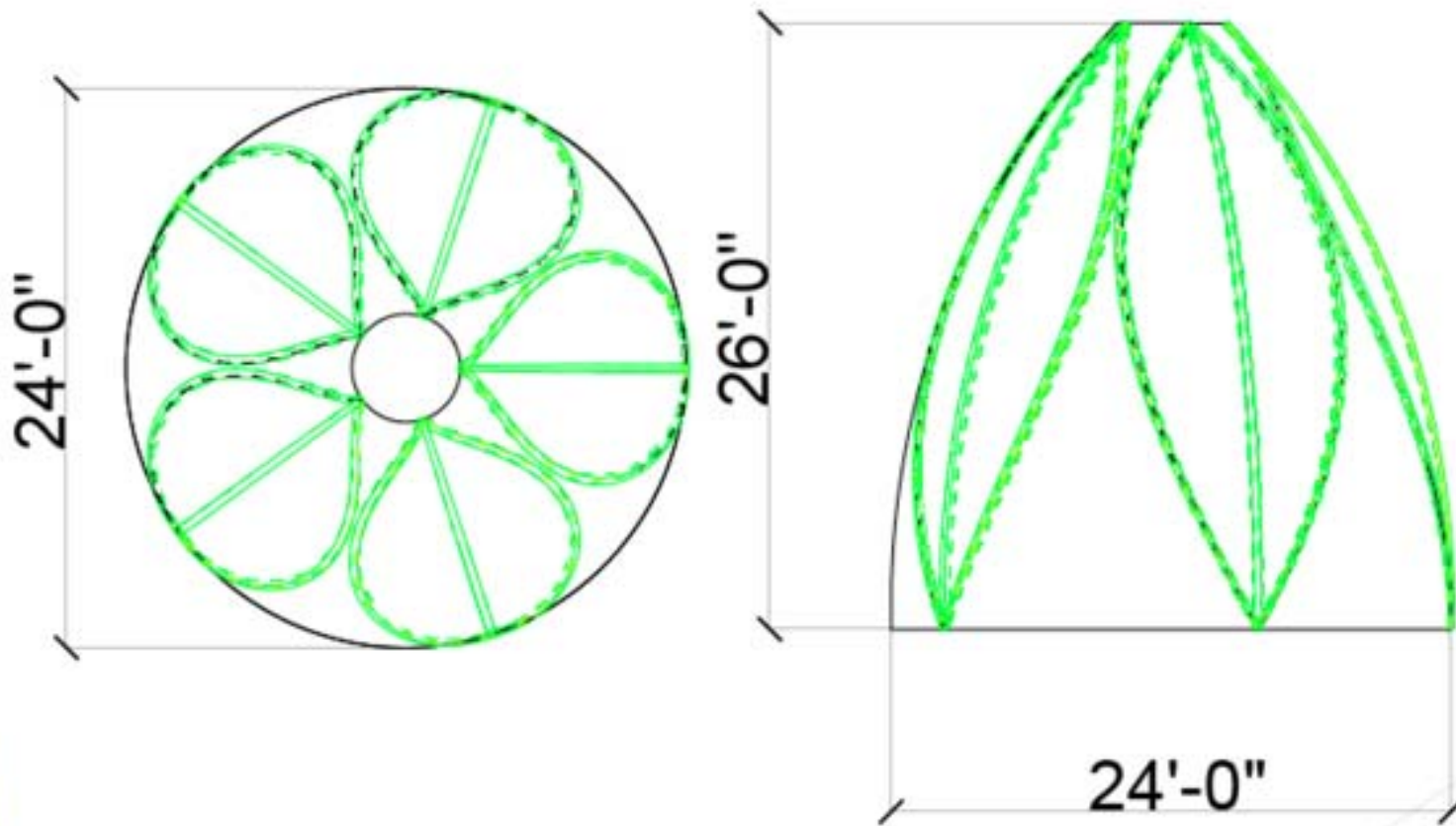
- The following slides show the four designs that were selected for additional review and comment. During the process, the Committee considered several factors: creativity of design, functionality/coverage, potential cost, ease of assembly and disassembly.
- Design and some measurement, potential production details are provided from the final presentation of the Dunwoody assignment.
- Designs are presented for:
 - Mike Lenz/Oliver Huston
 - Mitchell Olson
 - Crispin Vang
 - Karla Schmitt



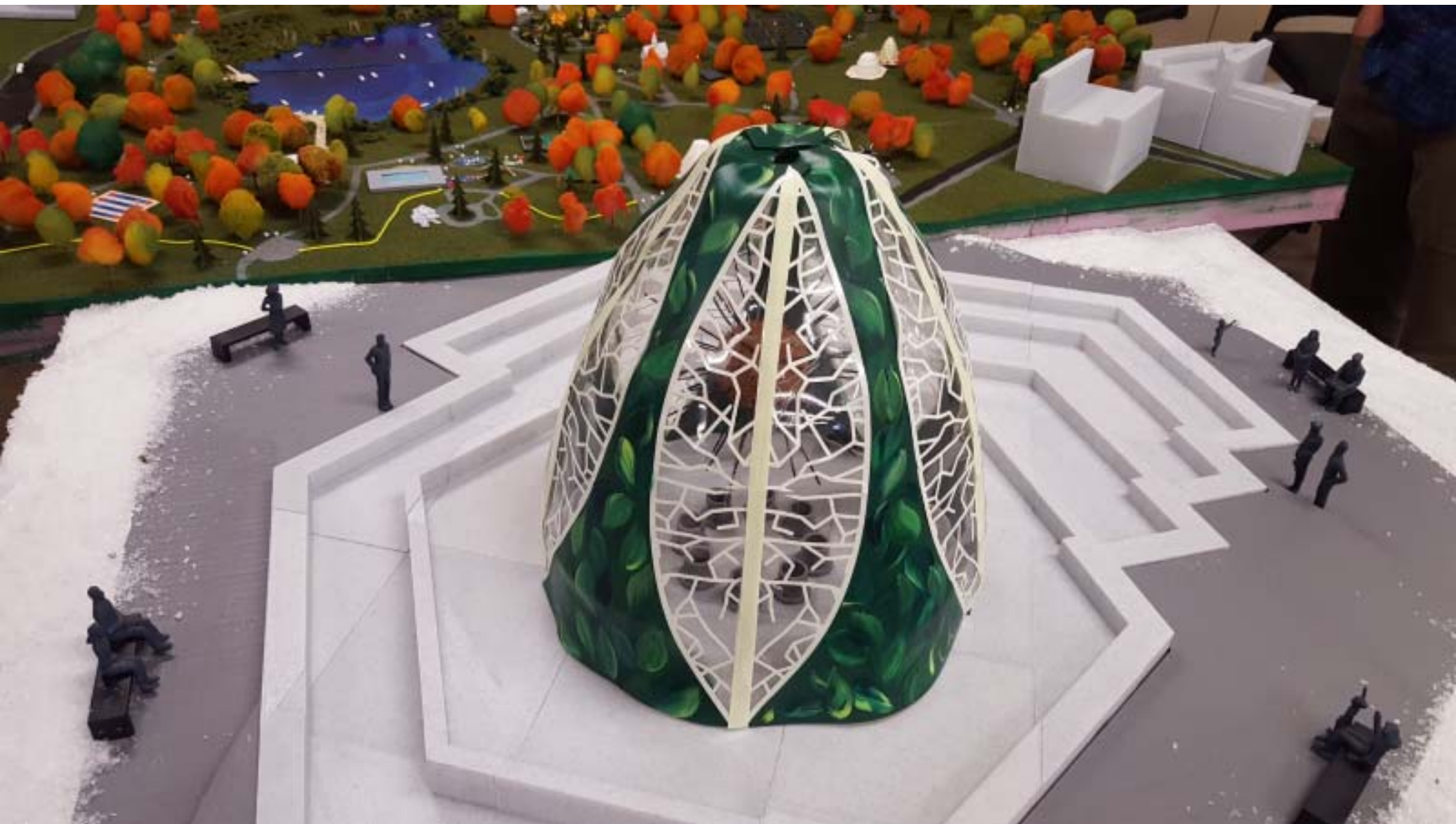
Lenz/Huston

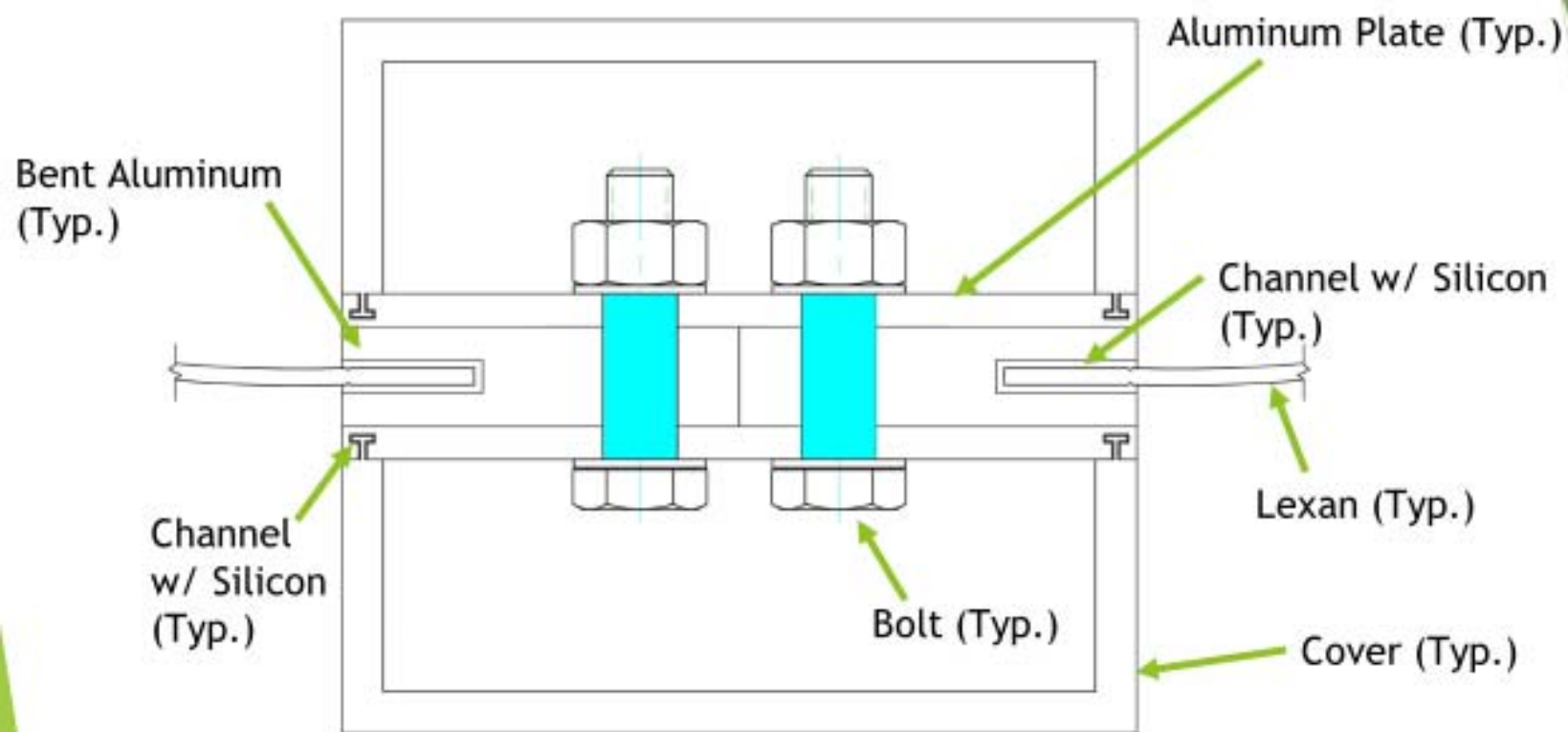


Plan & Elevation



Mike Lenz / Oliver Huston





Connection Detail

Estimated Price for Materials

Lexan = \$35,000

Aluminum

Center Frames = \$2,000

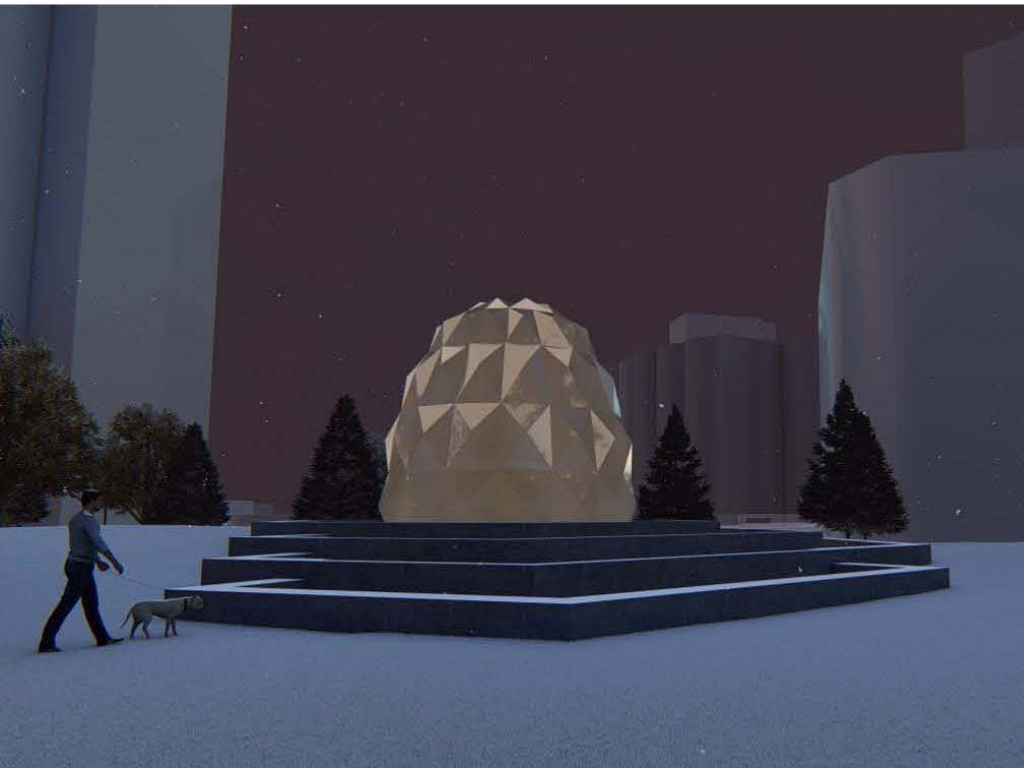
Outer Curved Frames = \$4,300

Paint/Tape/Lights = \$10,000

Total = \$47,000 to \$51,300 for materials

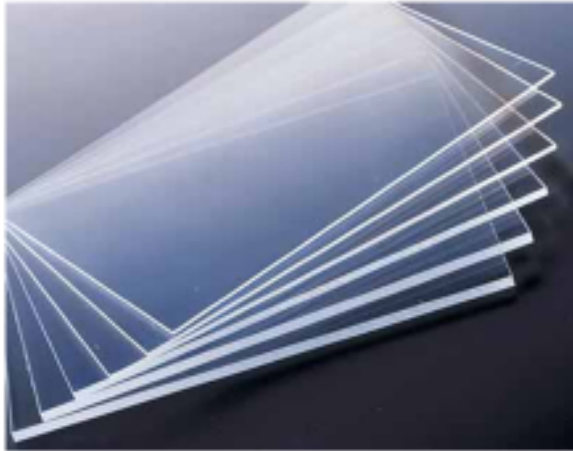
Mitchell Olson

Renderings



Mitchell Olson

Materials - Weight - Cost

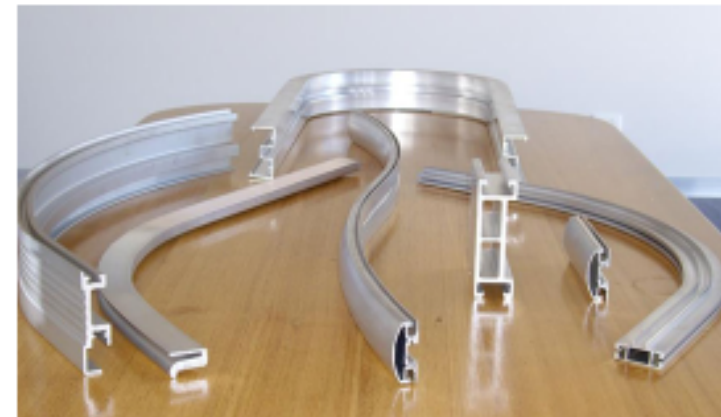
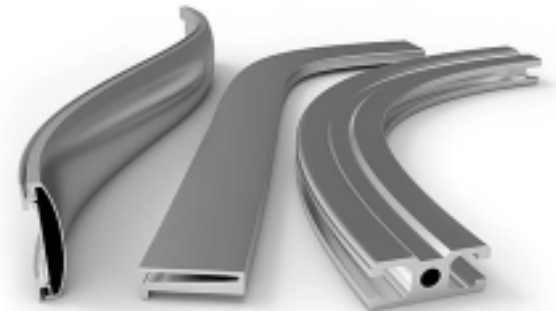


Aluminum Recyclable
Light Weight and Strong
Corrosion Resistance
4" square $\frac{1}{8}$ " thick with c- channel

Polycarbonate
Works in a wide temperature range
UV resistance
Abrasion Resistant Coating
Formability

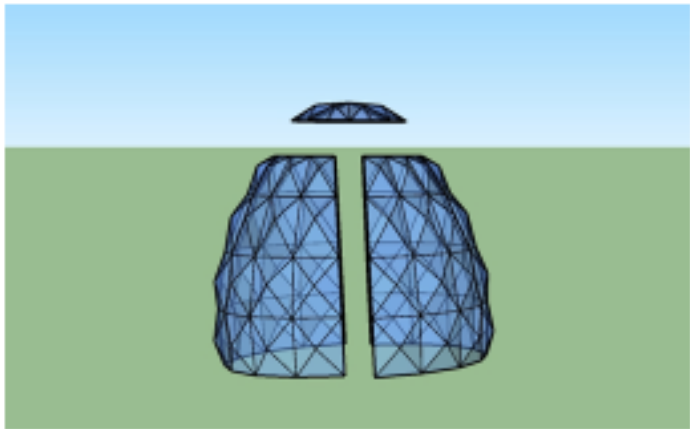
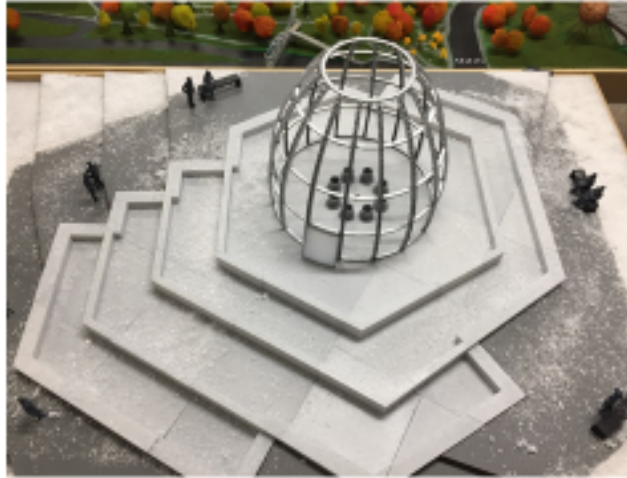
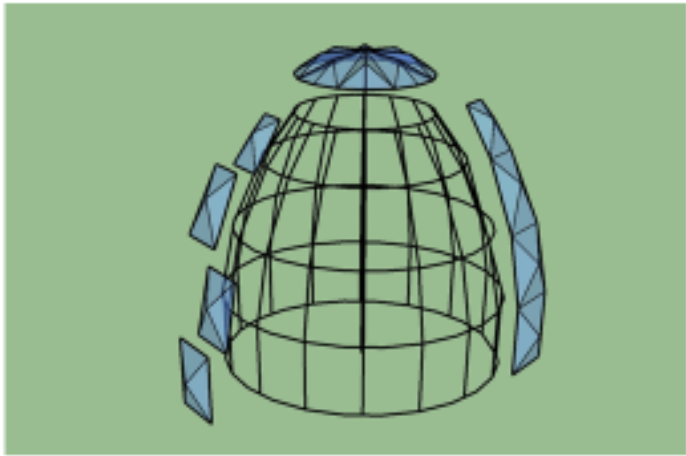
Estimated weight = 2,915lbs
Aluminum 600lf @ 4.4lbs per lf = 2,640lbs
Polycarbonate 1,700sf @ .75lbs per sf = 1,275lbs

Estimated cost for materials = \$66,400 – 101,600
Polycarbonate \$5.00 – 10.00 per sf = \$8,500 – 17,000
Forms cost \$10,00 - 15,000 each = \$50,000 – 75,000
Aluminum \$13 - 16 per lf = \$7,900 – 9,600



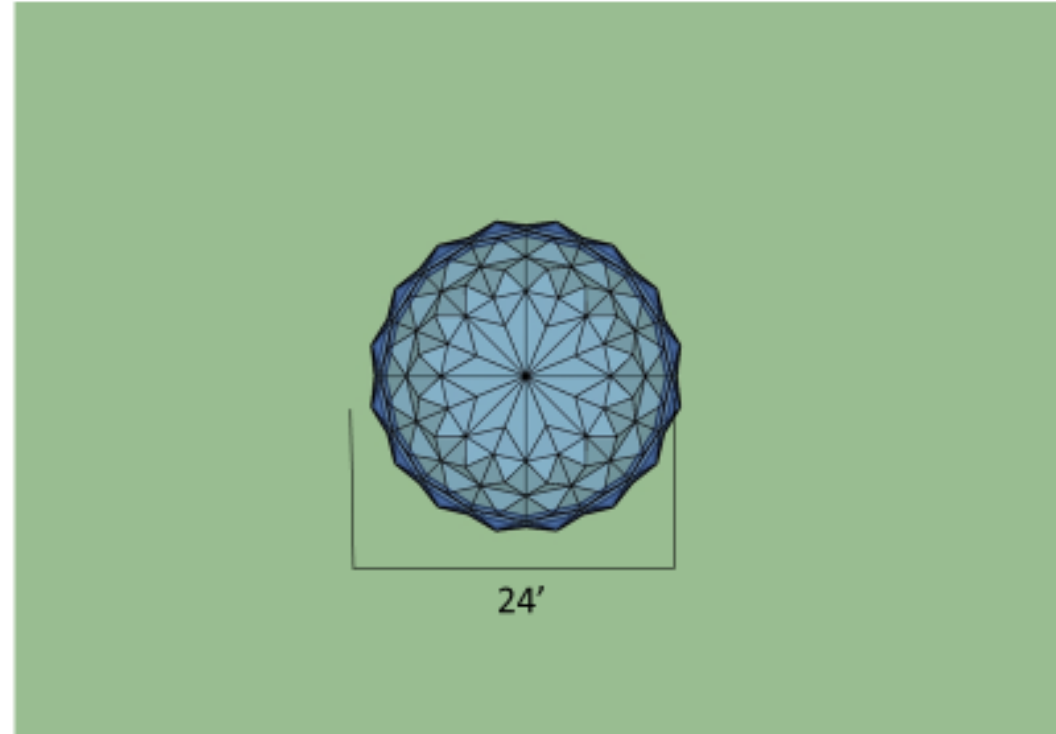
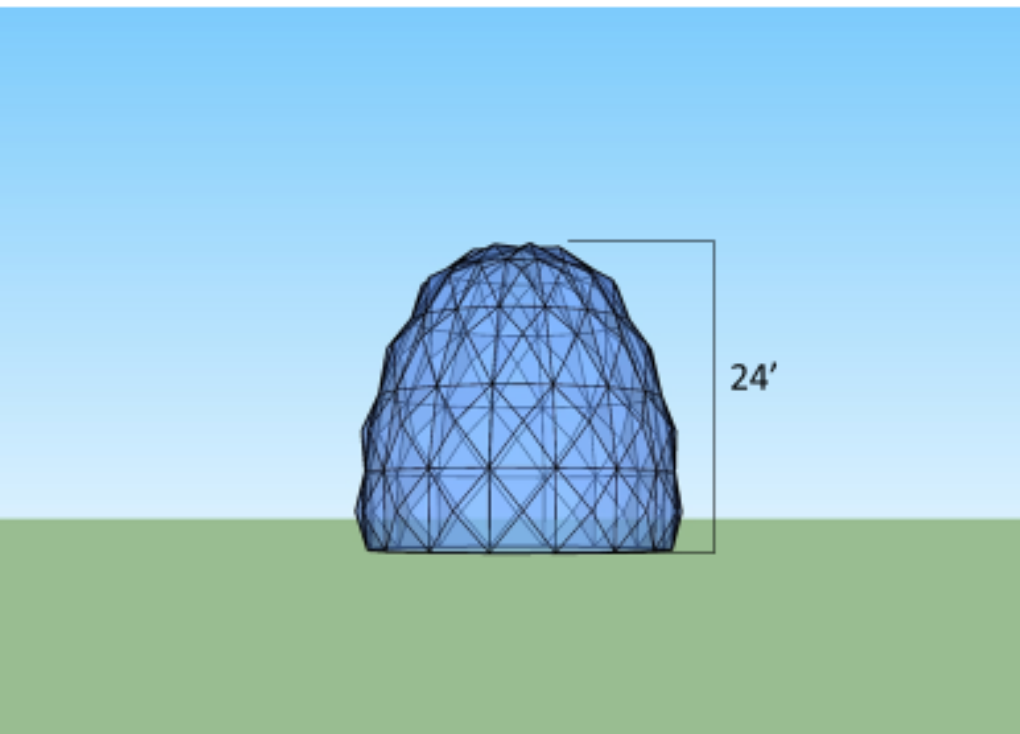
Mitchell Olson

Structure & Assembly



Mitchell Olson

Enclosure Measurements



Crispin Vang

Berger Fountain Enclosure

“Snow Flake Tree of Loring Park”

The Snow Flake tree enclosure is reduced in size and cost by removing dandelion “stems”

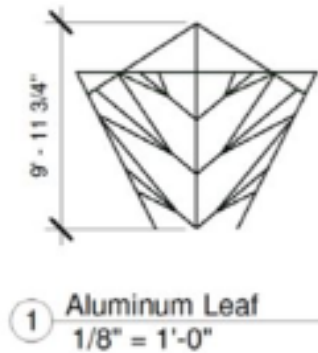
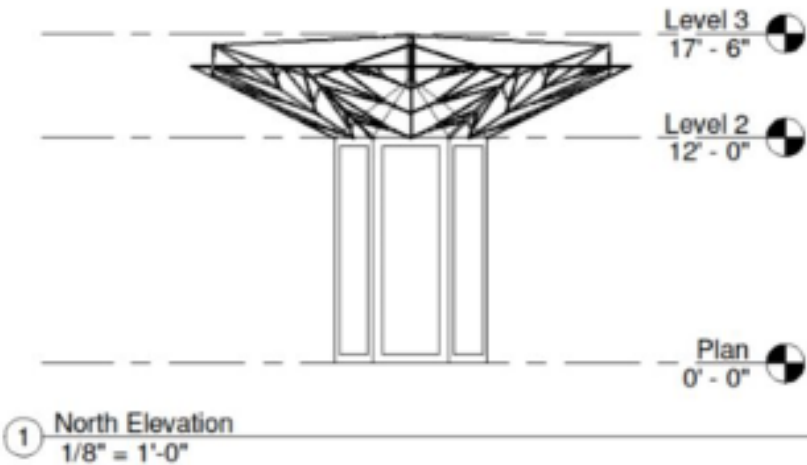
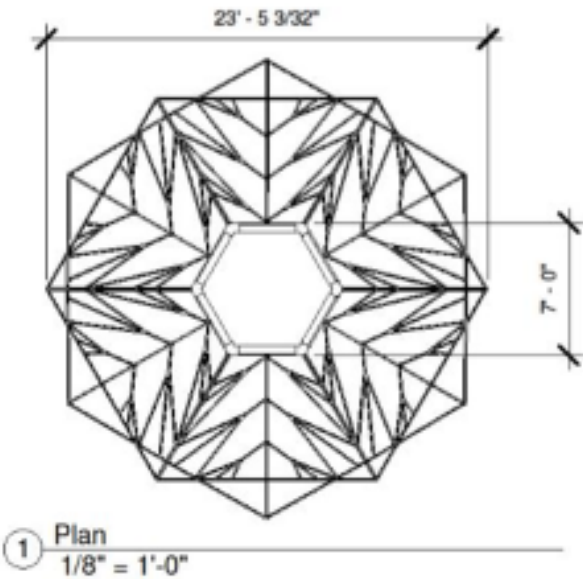




Design Factors

- Enclosure built without stems installed into fountain
- Smaller scale enclosure to reduce cost in materials and labor installation
- Durable and Lightweight material with modular assembly
- Tree form with a snowflake shape
 - Inspired by surrounding landscape and winter season
- Fountain is visible during winter season
- Ease of assembly to allow relocation of enclosure to another area of the park during off peak seasons as additional art sculpture
- 3-4 day assembly time
- 3-4 man team with use of lift and ladders

Measurements



Materials

- Aluminum Structure – 1,558 lb, \$10,000-\$15,000
 - 2” extruded aluminum leaf structure Finish: Green semi gloss
 - 6” vertical upright post with key hole system (6)
Finish: Black Semi Gloss
 - 6” Black upper/lower cross tube (12)
Finish: Black Semi Gloss
- 1/4” Makrolon GP-V Pebble Poly carbonate panels (6) - 158lb, \$15,000-\$20,000
- 2” Steel cables (6)
- 3/8”(dia.) x 3 3/4” (Length) Expansion Anchor Bolt (24)
- 4000 K LED Lights

Makrolon GP-V Pebble Poly carbonate panels



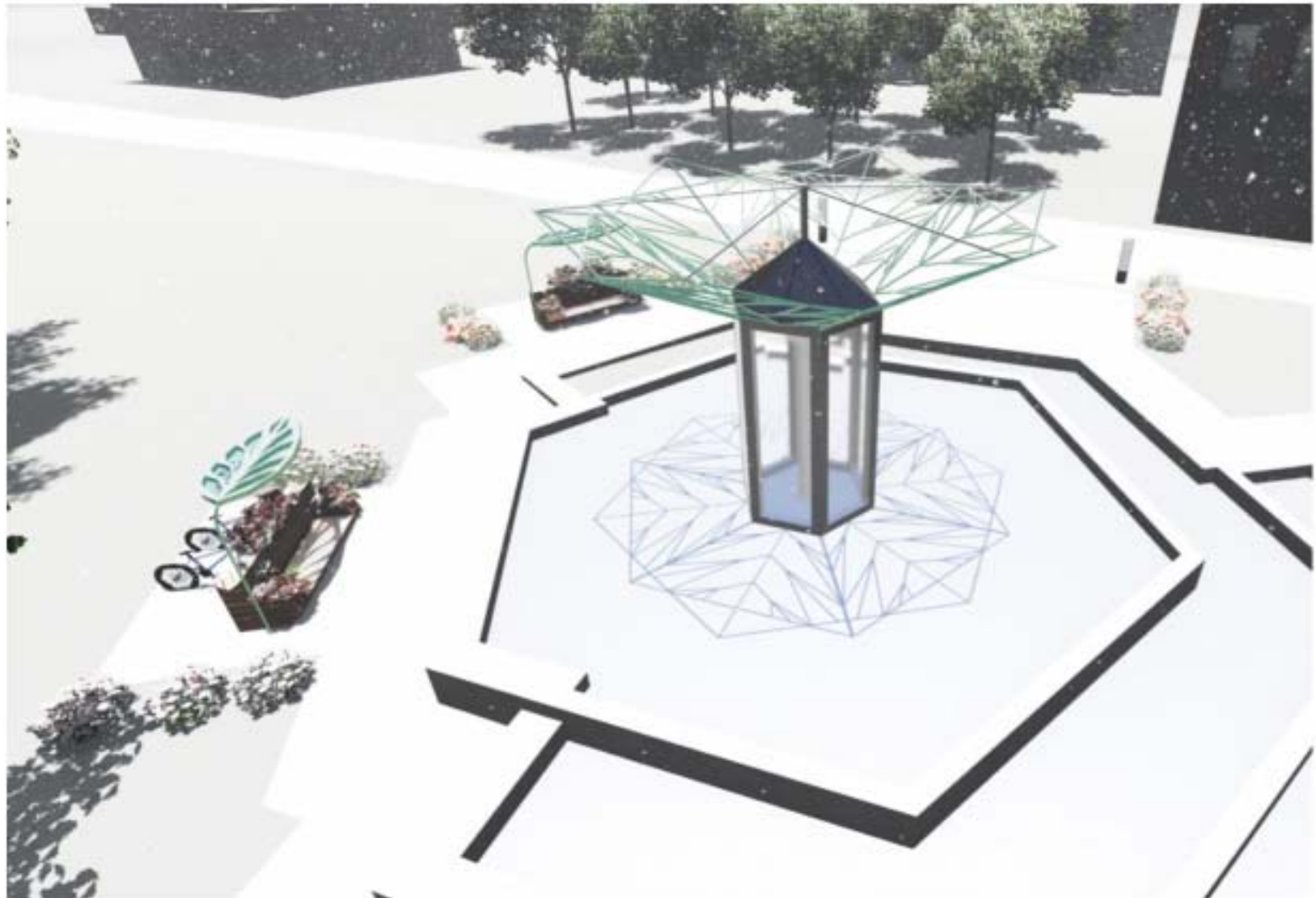
Expansion Anchor Bolt



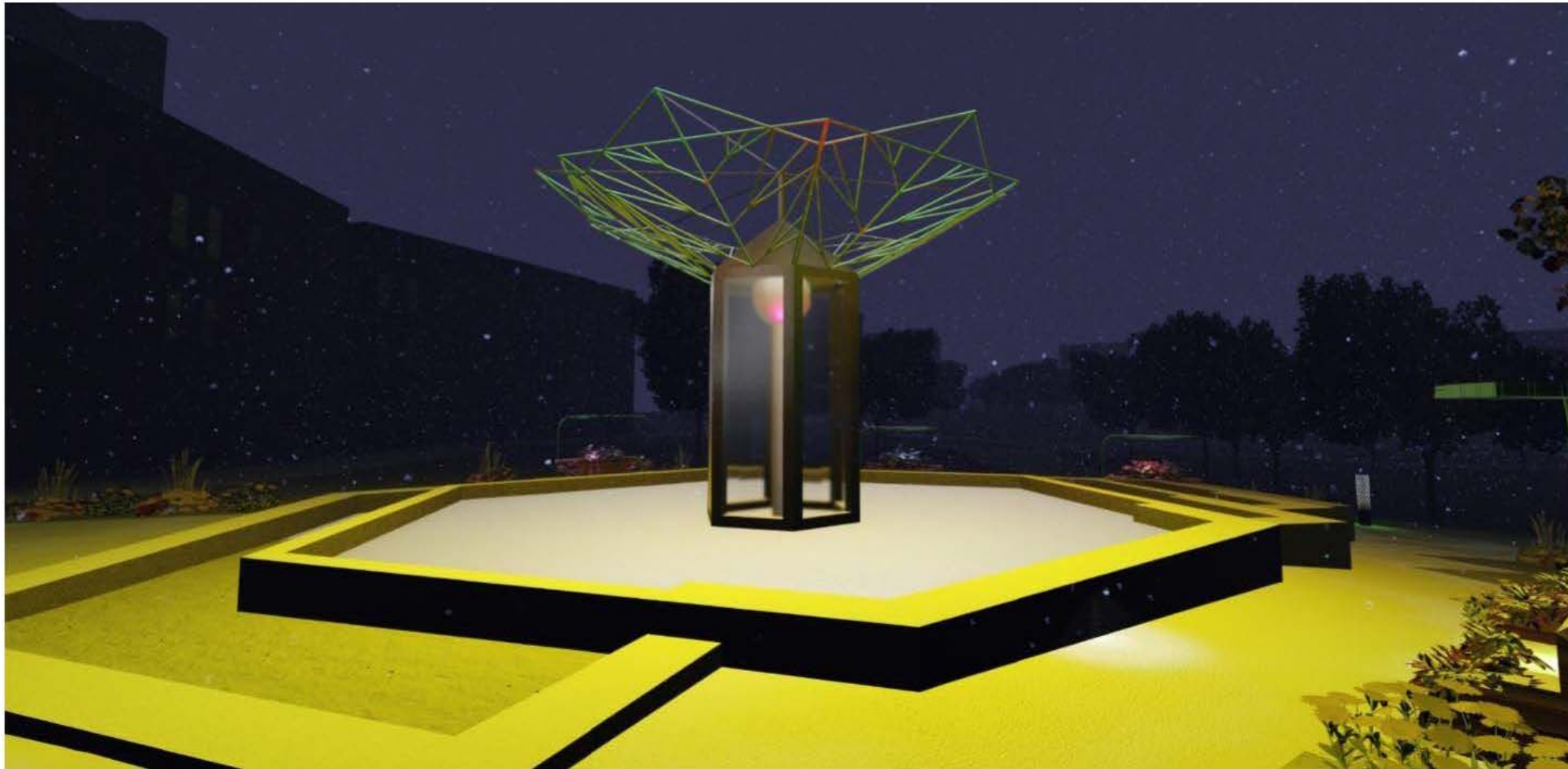
Key Hole System



Crispin Vang



Crispin Vang



Karla Schmitt



Karla Schmitt



Karla Schmitt



AS SCULPTURES

Each half can be dismantled and moved to frame the entry at Loring Greenway.

Anywhere is possible

Bolted down with concrete anchor

Taller one is about 24' high



INSPIRATION

Dandelions

Hexagons

Snow flakes

Six-petaled flowers

Existing plaza
geometry

Origami

Sacred geometry

COMMUNITY INPUT

- Open Discussion of Four Finalist Designs
- Input and comment – written/verbal (index cards and Post-It notes are provided for you)
- Summary of input and feedback will be distributed to the community and will be incorporated into further discussion between the Workgroup Committee, CLPC, Friends and MPRB.

NEXT STEPS

- Narrow selection of Artistic Winter Cover Designs to two for further professional cost/production analysis and detailed production schematics
- Detailed cost analysis for restoration of all mechanical and structural components of the Berger Fountain
- Continued engagement of Dunwoody departments (Architecture/Graphics) to assist with various components of the project moving forward
- Discussion of Final Fountain Plaza Design and potential costs
- Fundraising Program (estimated funds needed for full project- \$1.0 million)
- Targeted completion of all phases – Fall 2022